



NAVAL SOLUTIONS



# THE FUTURE OF NEAR-SHORE MARITIME SECURITY

- **HIGH SPEED CAPABILITY**  
Reduced response times
- **ERGONOMIC WORK SPACES**  
Improved human performance
- **LOW MAINTENANCE**  
More time at sea
- **LOW THROUGH LIFE COST**  
More capabilities for the same budget
- **SUPERIOR FUEL ECONOMY**  
Achieving a longer range or higher speed
- **CUSTOMISED DESIGN**  
Meeting precise operational requirements
- **SUPERIOR SEA KEEPING**  
Expanded operating envelope and crew habitability

LITTORAL COMBAT SHIP ▶







▲ CAPE CLASS PATROL BOAT

Austal is the world's leading supplier of high performance aluminium vessels for the defence sector. With its unrivalled in-house design resource and powerful production capacity, Austal provides fast delivery of naval, patrol and auxiliary platforms which address unique customer requirements.

### New Technology, Proven Solutions

By leveraging proven commercial technology into the defence sector, Austal vessels not only deliver superior performance and flexibility but also offer efficient and reliable service, and substantially reduced operating costs.

### Strength and Experience

A global service and support network, financial and technical strength and experience from more than 250 vessel builds over more than twenty five years are reasons why the world's leading navies, coast guards and police forces are among Austal's customers.

◀ TRINIDAD AND TOBAGO COAST GUARD 30M



# LITTORAL COMBAT SHIP (LCS)

Designed and built by Austal, the US Navy's Littoral Combat Ship (LCS) is a high speed warship designed to carry out a range of operations including mine countermeasures, anti-submarine warfare and the prosecution of surface attack craft in the near-shore (littoral) environment.

By utilising Austal's proven trimaran hullform, the LCS provides enhanced seakeeping, low resistance, superior aviation facilities and large payload carrying capacity.

---

## MISSION CONFIGURATIONS

---

- Anti-mine warfare (MIW)
- Anti-submarine warfare (ASW)
- Surface warfare (SUW)
- Future mission capabilities
- Special operations (Spec Ops)
- Intelligence, surveillance & reconnaissance (ISR)
- Humanitarian assistance/disaster relief (HA/DR)

---

## LCS PRINCIPAL PARTICULARS

---

Length: ..... 127 m  
Beam: ..... 31.4 m  
Hull draft (max): ..... 4.5 m  
Mission bay: ..... 11,000 m<sup>3</sup>  
Speed: ..... 40 knots  
Range: ..... 3,500 nm  
Crew: ..... 40  
Aviation: ..... 2 x SH-60 or 1 x CH-53



# 80M MULTI-ROLE COMBATANT (MRC)

The Multi-Role Combatant (MRC) is a versatile yet cost effective littoral seaframe. Utilising the unique and proven Austal trimaran platform, the MRC couples high speed and superior seakeeping performance with unparalleled deck space. From border patrol to ASW to humanitarian relief missions, the Austal MRC is the truly reconfigurable seaframe.

---

## MISSION CONFIGURATIONS

---

- Large, flexible RO-RO mission/logistics deck
- Systems packaged mission modules
- Multi-mission helicopter capability
- Exclusive Economic Zone border patrol
- Area of operation theatre hospital
- Light amphibious operations
- Anti-submarine warfare
- Constabulary support
- Humanitarian Support
- Command & Control
- Hydrographic Survey
- Replenishment at-sea
- Aviation operations
- Law enforcement
- Search & rescue
- Light sealift

---

## MRC 80 PRINCIPAL PARTICULARS

---

Length: .....80 m  
Speed (max): .....35 knots  
Range: .....3,600 nm  
Deadweight: .....300 tonnes  
Mission deck: .....450 m<sup>2</sup>  
Flight deck: ..... 1 x NH-90 or similar  
Crew: .....46





# AUXILIARY AND PATROL

AUSTAL IS ABLE TO PROVIDE PATROL VESSELS TO ADDRESS A BROAD CROSS-SECTION



 ARMED FORCES OF MALTA



 MINISTRY OF INTERIOR, KUWAIT



 QUEENSLAND POLICE SERVICE, AUSTRALIA



 TRINIDAD & TOBAGO COAST GUARD



## AUSTAL INSHORE PATROL 21

Length overall ..... 21.2 m  
 Beam (moulded)..... 5.5 m  
 Hull draft (maximum) ..... 1.83 m  
 Speed (maximum) ..... 28.5 knots  
 Endurance ..... 48 hrs  
 Crew ..... 8

## AUSTAL PATROL 22

Length overall ..... 21.6 m  
 Beam (moulded)..... 6.0 m  
 Hull draft (maximum) ..... 1.5 m  
 Speed (maximum) ..... 25 knots  
 Range ..... 325 nm  
 Crew ..... 3  
 Personnel seating ..... 41

## PATROL 24

Length overall ..... 24.0 m  
 Beam (moulded)..... 7.8 m  
 Hull draft (maximum) ..... 1.39 m  
 Speed (maximum) ..... 26.0 knots  
 Range ..... 900 nm  
 Crew accommodation ..... 4 x 2 berths  
 ..... + 6 additional berths

## AUSTAL FAST PATROL 30

Length overall ..... 30.0 m  
 Beam (moulded)..... 6.4 m  
 Hull Draft (approx.) ..... 1.5 m  
 Speed (maximum) ..... 40 knots  
 Range ..... > 1000 nm  
 Crew ..... 11



OF NEEDS FOR HEIGHTENED SECURITY AND SURVEILLANCE IN PORTS AND COASTAL WATERS.

# AUSTAL PATROL BOATS



 MINISTRY OF DEFENCE, YEMEN



 CUSTOMS & BORDER PROTECTION, AUSTRALIA



 ROYAL AUSTRALIAN NAVY



AUSTAL PATROL 37.5	
Length overall .....	37.5 m
Beam (moulded).....	7.2 m
Hull draft (maximum) .....	2.2 m
Speed (maximum) .....	29.0 knots
Range .....	1,000 nm
Crew.....	3 officers
.....	16 sailors



AUSTAL PATROL 38	
Length overall .....	38.2 m
Beam (moulded).....	7.2 m
Hull draft (maximum) .....	2.3 m
Speed (maximum) .....	24.0 knots
Range .....	3,000 nm
Crew accommodation .....	15
Additional personnel .....	12



ARMIDALE CLASS PATROL 56	
Length (overall): .....	56.8 m
Beam (moulded): .....	9.5 m
Hull draft (maximum): .....	2.7 m
Speed: .....	>25 knots
Range: .....	3,000 nm
Crew Accommodation: .....	29



INSHORE PATROL 21



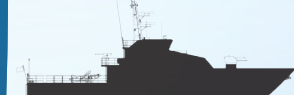
PATROL 22



PATROL 24



FAST PATROL 30



PATROL 37.5



PATROL 38



PATROL 39



ACPB 56



CCPB 58



# CAPE CLASS PATROL BOAT

The Cape Class Patrol Boats have greater range, endurance and flexibility in responding to maritime security threats than any other Australian patrol platform. These boats also have enhanced capability to operate in higher sea states and survive in more severe conditions.

The Cape Class Patrol Boats are designed to accommodate future upgrades in weapons systems, surveillance technology and response capability.



▲ CAPE ST GEORGE BRIDGE

---

## CCPB PRINCIPAL PARTICULARS

---

Length: .....58.1 m  
Beam: ..... 10.6 m  
Hull draft (max):.....3.1 m  
Speed: .....26 knots  
Range: ..... >4,000 nm  
Crew Accommodation: .....22





# HIGH SPEED SUPPORT VESSEL (HSSV)

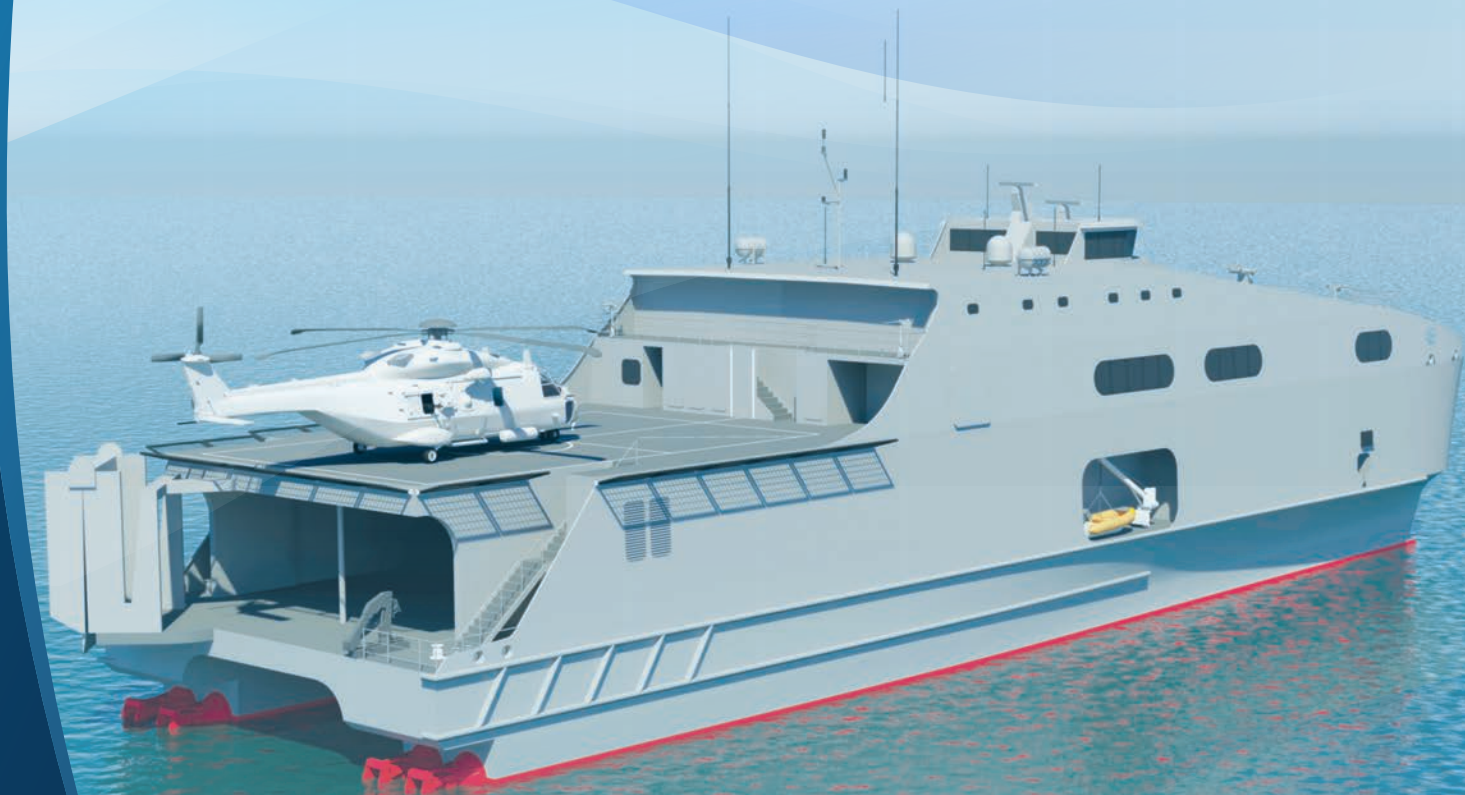
The High Speed Support Vessel (HSSV) is a multi-mission capable patrol or special operations solution based on Austal's proven high speed catamaran platform. The shallow draft, medium-lift-aviation vessel offers high speed performance and manoeuvrability, outstanding payload capacity for vehicles, equipment, troops and stores. With a helicopter platform, multi-deck hoist, stern ramp and crane, the HSSV is prepared for any military, SAR or humanitarian / disaster relief mission.



▲ SELF-DEFENCE CAPABLE HSSV

## HSSV PRINCIPAL PARTICULARS

Length:	72.5 m
	76.6 m (with ramp)
Beam (moulded):	18.2 m
Speed (maximum):	35 knots
Range:	2150 nm @ 12.5 knots
Flight Deck:	22.0 m x 12.0 m
Weapon:	1 x 20mm naval gun
	4 x 12.7mm GPMG
Sea/Rescue Boats:	2 x 7.3m RHIBs
Crew:	69
Embarked Personnel Seating:	260





# THEATRE SUPPORT VESSEL

In service since 2001, *WestPac Express* continues to redefine the transportation and logistics role of the Okinawa-based Third Marine Expeditionary Force (III MEF) of the United States Marine Corps. *WestPac Express* accomplishes in a single voyage what takes US Air Mobility Command multiple flights over a 14 to 16 day period, saving III MEF 250 flights and millions of dollars each year, while also achieving a faster deployment.



ROLL-ON ROLL-OFF CAPABILITY DELIVERS A FAST TURNAROUND FOR MAJOR LOGISTICS OPERATIONS. ▶

## "WESTPAC EXPRESS" PRINCIPAL PARTICULARS

Length: .....	101.1 m
Beam: .....	26.7 m
Hull draft: .....	4.2 m
Speed (90% MCR): .....	33 knots
Cargo deck (usable): .....	2,570 m <sup>2</sup>
Personnel seating: .....	900





# EXPEDITIONARY FAST TRANSPORT (EPF)

The EPF (Expeditionary Fast Transport) formerly the JHSV (Joint High Speed Vessel) is a new generation, multi-use platform capable of transporting troops and their equipment, supporting humanitarian relief efforts, the ability to operate in shallow waters, and can reach speed in excess of 35 knots fully loaded. The project brings together United States Navy, Army, Marines, and Special Operations Command to pursue a multi-use platform.



▲ EPF FEATURES MEDIUM LIFT AVIATION CAPABILITY.

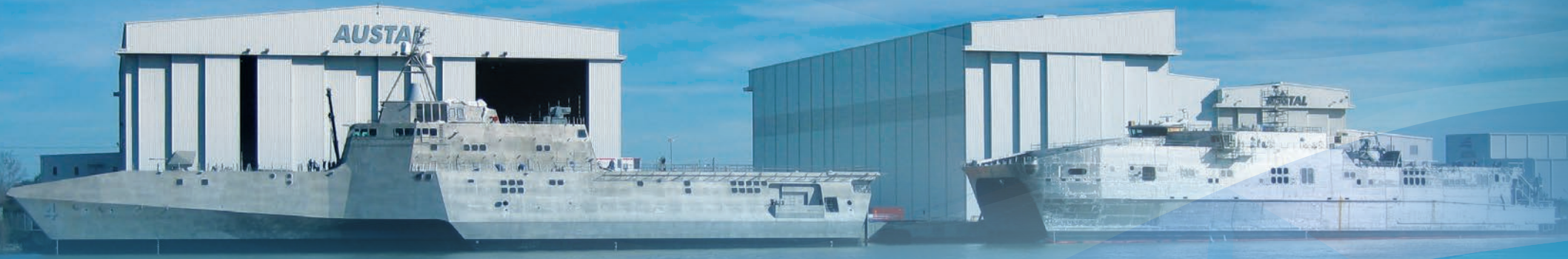
## EPF PRINCIPAL PARTICULARS

Joint-use between US Army and Navy

Length: .....	103 m
Beam: .....	28.5 m
Hull draft: .....	4.2 m
Troop seating: .....	312
Speed (90% MCR @ 700t deadweight): .....	35 knots
Aviation: .....	NAVAIR Level 1 Class 2 certified Flight Deck







MOBILE, ALABAMA, USA

HENDERSON, WESTERN AUSTRALIA



BALAMBAN, CEBU, PHILIPPINES



SHIPS • SYSTEMS • SUPPORT

HEAD OFFICE: 100 CLARENCE BEACH RD  
HENDERSON 6166  
WESTERN AUSTRALIA

EMAIL: [sales@ustal.com](mailto:sales@ustal.com)  
TELEPHONE: +61 8 9410 1111

[WWW.AUSTAL.COM](http://WWW.AUSTAL.COM)