

# AUSTAL PATROL 38



YEMEN PATROL BOATS

YARD NO: 301 - 310

DESTINATION: YEMEN

DELIVERED: DECEMBER 2004

CLIENT: REPUBLIC OF YEMEN, MINISTRY OF DEFENCE

## GENERAL VESSEL DESCRIPTION

Vessel type	Naval patrol boat
Material	Aluminium alloy
Hull form	Deep V, single chine monohull

## PRINCIPAL DIMENSIONS

Length overall	37.5 metres
Length (waterline)	32.4 metres
Beam (moulded)	7.2 metres
Depth (moulded)	5.0 metres
Hull draft (maximum)	2.2 metres

## PERSONNEL

Officers	3
Sailors	16

## ARMAMENT

- 1 x 255mm twin barrel naval gun
- 2 x 12.7mm heavy machine guns

## PROPULSION

Main engines	2 x Caterpillar 3512 2 x 1,305 kW @ 1,800 rpm
Gearboxes	2 x Reintjes WVS 730
Propellers	2 x fixed pitch

## PERFORMANCE

Speed - maximum	29.0 knots
Fuel consumption	0.55 tonnes/hour
Range	1,000 nautical miles

## CLASSIFICATION

Germanischer Lloyd  
USL Code 2B in construction with Yemeni Marine Authority



# AUSTAL PATROL 38

Vessel type: Naval Patrol Boat

YEMEN PATROL BOATS

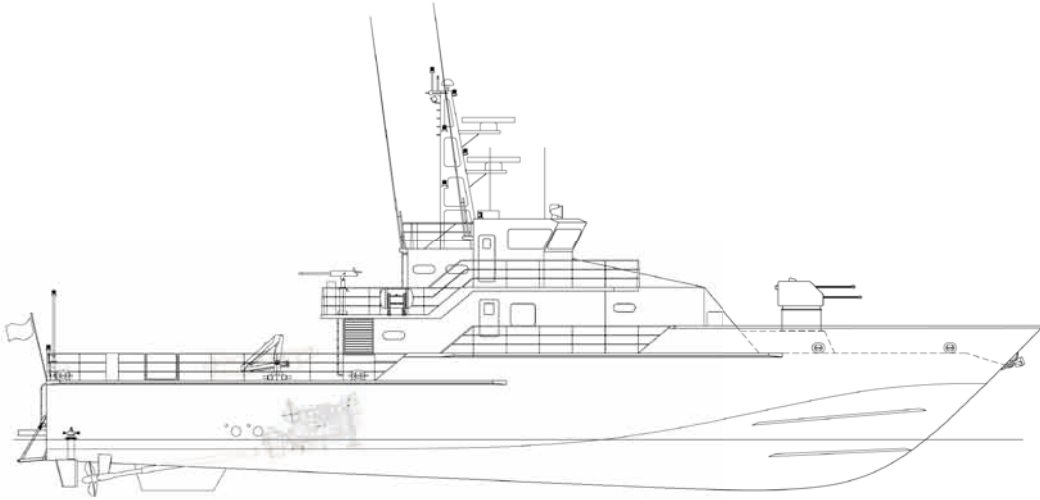
YARD NO: 301 - 310

DESTINATION: YEMEN

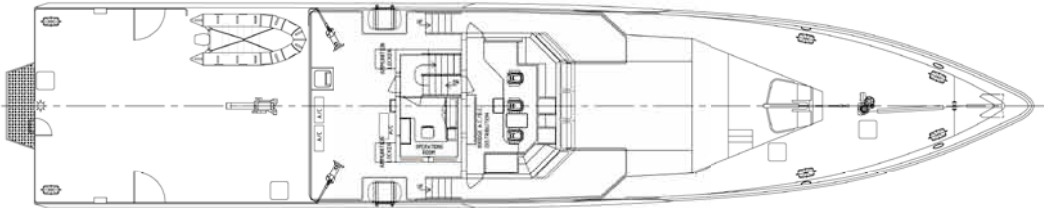
DELIVERED: DECEMBER 2004

CLIENT: REPUBLIC OF YEMEN, MINISTRY OF DEFENCE

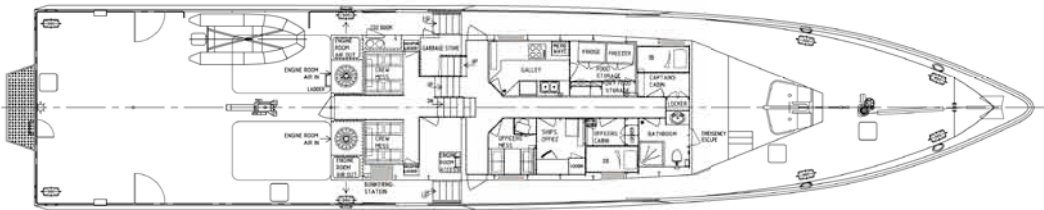
PROFILE



BRIDGE DECK



UPPER DECK



MAIN DECK

