

VEHICLE-PASSENGER 50



"SPIRIT OF KANGAROO ISLAND"

YARD NO: 117

DESTINATION: AUSTRALIA

PRINCIPAL DIMENSIONS

Length overall	50.4 metres
Length (waterline)	49.5 metres
Beam (moulded)	17.8 metres
Depth (moulded)	5.0 metres
Hull draft (maximum)	2.5 metres

PAYLOAD AND CAPACITIES

Passengers	244
Vehicles	53 cars or 8 trucks and 18 cars
Maximum deadweight	396 tonnes
Maximum axle loads	Centre lanes (dual axle) 12.0 tonnes (single axle) 8.0 tonnes
	Side lanes 2.0 tonnes
Crew	6
Fuel	53,000 litres

PROPULSION

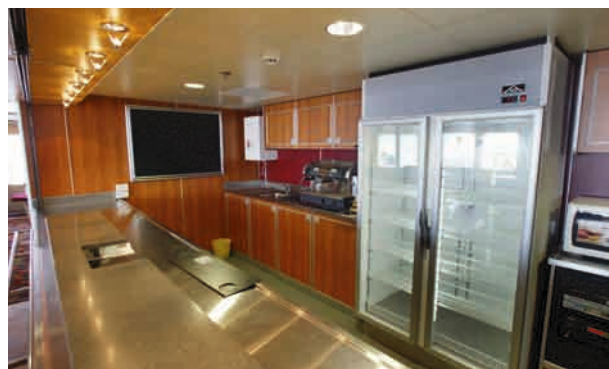
Main engines	2 x Caterpillar 3512B 2 x 1,118 kW @ 1,800 rpm
Gearboxes	2 x Reintjes WAF 643
Propellers	2 x Veem

PERFORMANCE

Speed (95t DWT, 90% MCR)	16.3 knots
Fuel consumption (approx.) @ 90% MCR	0.46 tonnes/hour

CLASSIFICATION

Det Norske Veritas
Transport SA USL 1C



VESSEL DESIGNED BY AMD MULTIHULL DESIGNS

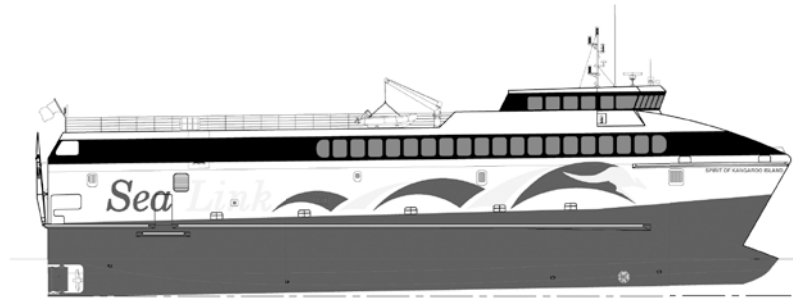
DELIVERED: DECEMBER 2003

CLIENT: KANGAROO ISLAND SEALINK

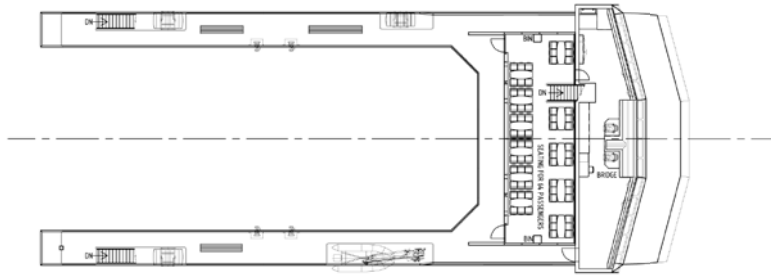
VEHICLE-PASSENGER 50

Vessel type: 50.4m Medium Speed Vehicle-Passenger Catamaran

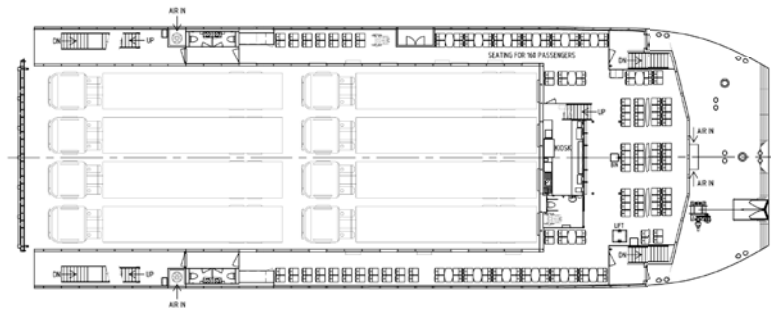
PROFILE



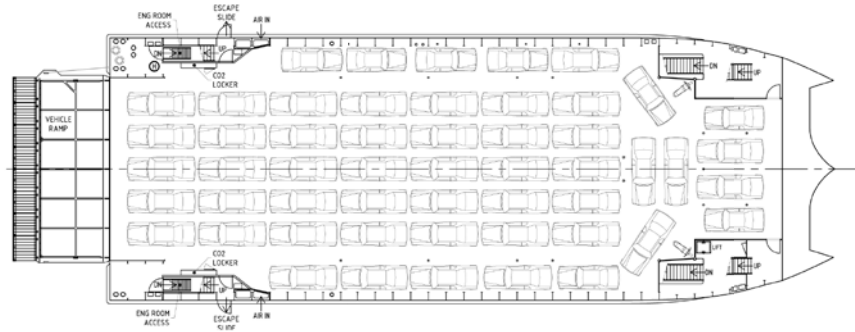
BRIDGE DECK



UPPER DECK



MAIN DECK



HULLS



"SPIRIT OF KANGAROO ISLAND"

YARD NO: 117

DESTINATION: AUSTRALIA

DELIVERED: DECEMBER 2003

CLIENT: KANGAROO ISLAND SEALINK

100 Clarence Beach Road
Henderson
Western Australia 6166

Tel +61 8 9410 1111
Fax +61 8 9410 2564
sales@austal.com
www.austal.com

