

AUTO EXPRESS 127



"BENCHIJGUA EXPRESS"

YARD NO.: 260

DESTINATION: CANARY ISLANDS

DELIVERED: APRIL 2005

CLIENT: FRED. OLSEN, S.A.

PRINCIPAL DIMENSIONS

Length overall	126.7 metres
Length (waterline)	116.9 metres
Beam (moulded)	30.4 metres
Depth (moulded)	8.2 metres
Hull draft (approx.)	4.2 metres

PAYLOAD AND CAPACITIES

Passengers	1,291
	Outdoor seating for 128
Crew	35
Vehicles	341 cars
Heavy vehicles	450 truck lane metres and 123 cars
Centre lanes between pillars	4.6 metres
Trucks under raised mezzanine deck	4.2 metres
Trucks aft of raised mezzanine deck	4.6 metres
Cars under mezzanine deck	2.0 metres
Cars over mezzanine deck	2.0 metres
Maximum deadweight	1,141 tonnes
Maximum axle loads (centre lanes)	15 tonne/dual axle
(outer lanes)	12 tonne/dual axle
(mezzanine lane)	0.8 tonne/dual axle

PROPULSION

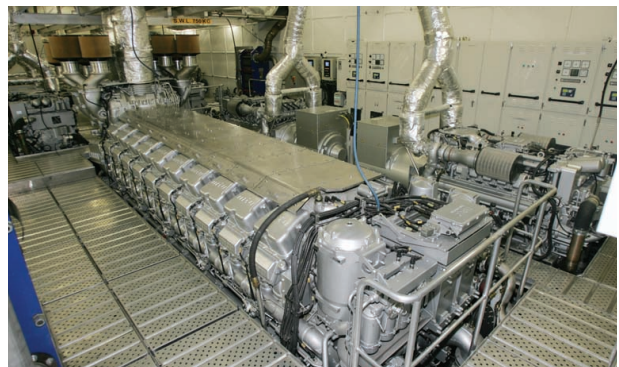
Main engines	4 x MTU 20V 8000 M70
	4 x 8,200 kW @ 1,095 rpm
Gearboxes	2 x Renk ASL65
	1 x Renk ASL2x80
Waterjets	2 x KaMeWa 125 S11
	1 x KaMeWa 180 B11

PERFORMANCE (with Ride Control fitted)

Speed (100% MCR)	40.5 knots
Fuel	145,000 litres

CLASSIFICATION

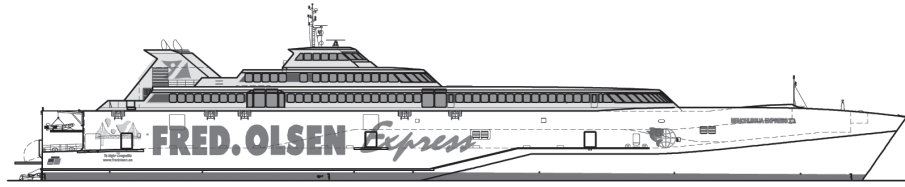
Germanischer Lloyd
 ✕ 100 A5, HSC-B OC3 Highspeed Passenger/Ro.Ro Type, MC, AUT
 Spanish Flag Authority



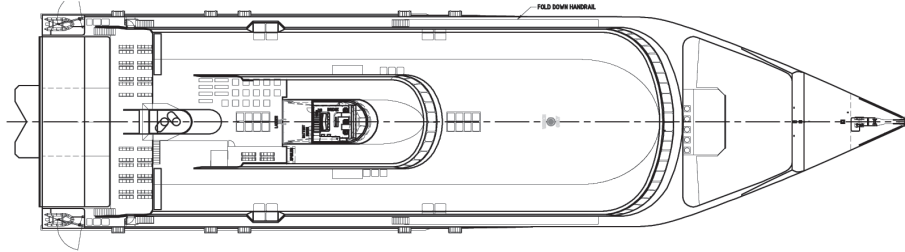
AUTO EXPRESS 127

Vessel type: 127m Vehicle-Passenger-Cargo Trimaran

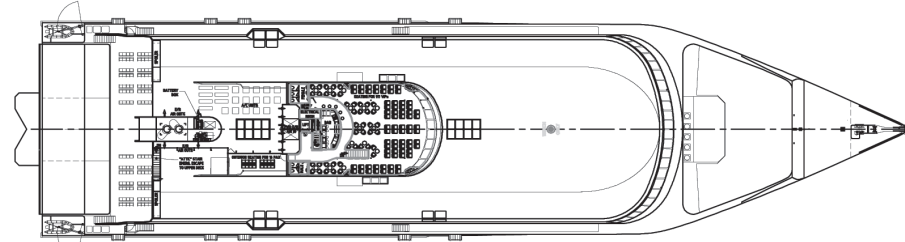
PROFILE



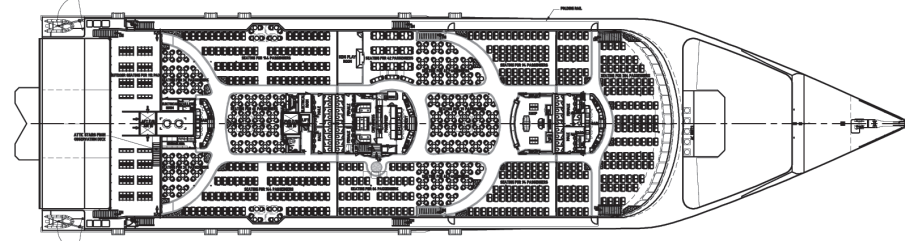
BRIDGE DECK



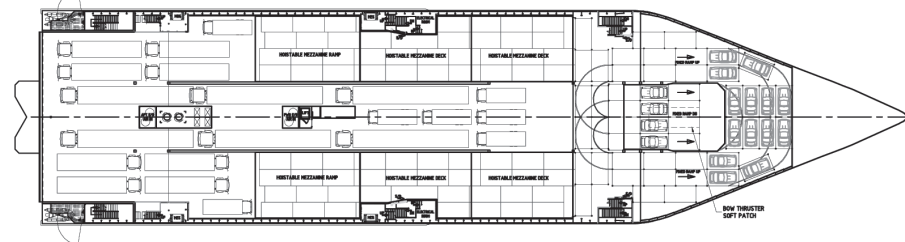
OBSERVATION DECK



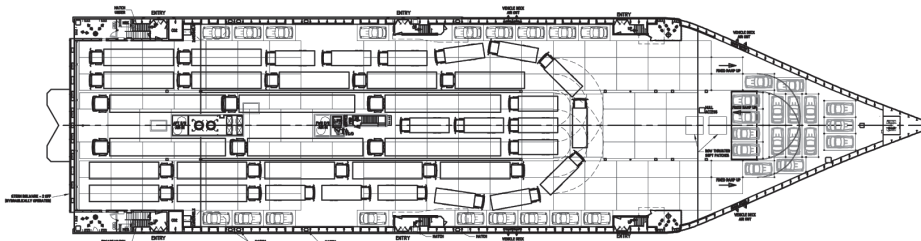
UPPER DECK



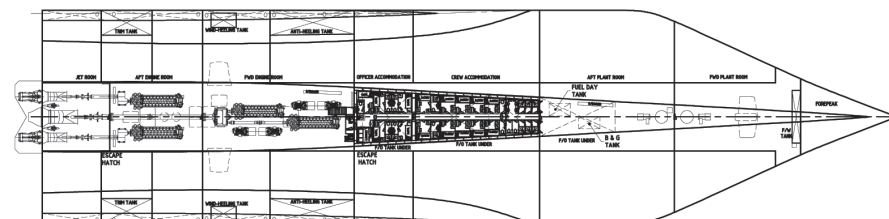
MEZZANINE DECK



MAIN DECK



HULL



"BENCHIJUGUA EXPRESS"

YARD NO: 260

DESTINATION: CANARY ISLANDS

DELIVERED: APRIL 2005

CLIENT: FRED. OLSEN, S.A.

100 Clarence Beach Road
Henderson
Western Australia 6166

Tel +61 8 9410 1111
Fax +61 8 9410 2564
sales@austal.com
www.austal.com

