

# AUTO EXPRESS 69



"JAZAN" AND "FARASAN"

YARD NO : 342 & 343

DESTINATION : SAUDI ARABIA

DELIVERED : 2009

CLIENT : KINGDOM OF SAUDI ARABIA

## PRINCIPAL DIMENSIONS

Length overall	68.6 metres
Length (waterline)	61.8 metres
Beam (moulded)	17.65 metres
Hull depth (moulded)	5.25 metres
Hull draft (maximum)	3.0 metres

## PAYLOAD AND CAPACITIES

Passengers	650
Crew	18
Vehicles	50 Cars plus 15 x 7 tonne trucks
Maximum axle loads	
Centre lanes	(dual axle) 10 tonnes (single axle) 8 tonnes
Outer lanes	1.5 tonnes
Vehicle deck height	3.1 metres
Maximum deadweight	258 tonnes
Fuel	47,500 litres

## PROPULSION

Main engines	4 x MTU 16V 4000 M73L 2,880 kW @ 2,050 rpm
Gearboxes	4 x ZF 9050 NR2H
Waterjets	4 x Kamewa 80S3

## PERFORMANCE

Service speed (90% MCR)	30.0 knots
-------------------------	------------

## CLASSIFICATION

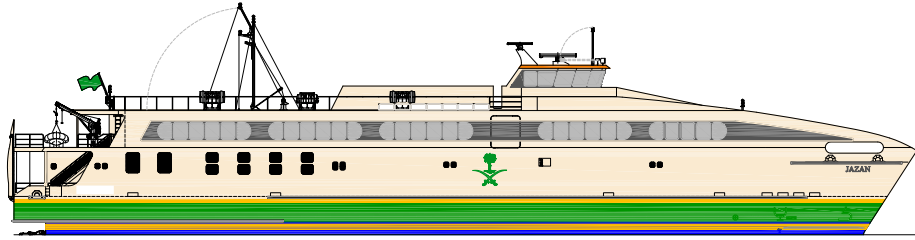
Germanischer Lloyd  
 ✕100 A5 HSC - Passenger B OC3 equivalent  
 ✕MC Passenger B  
 Kingdom of Saudi Arabia Flag



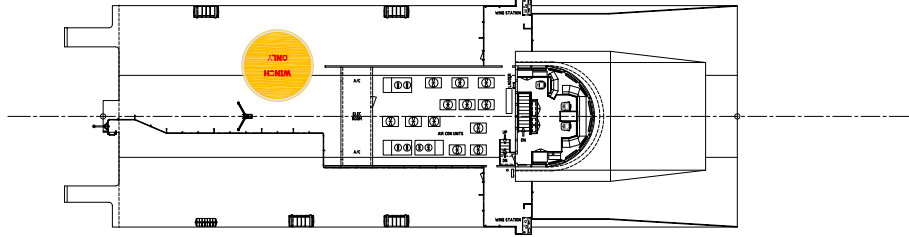
# AUTO EXPRESS 69

Vessel type: 69m High Speed Vehicle-Passenger Catamaran

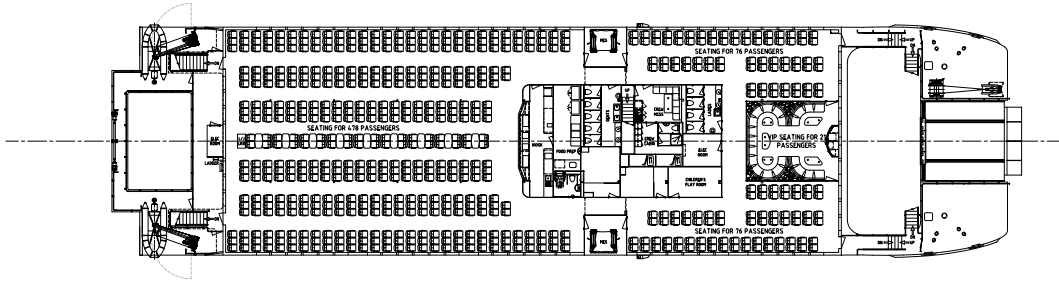
PROFILE



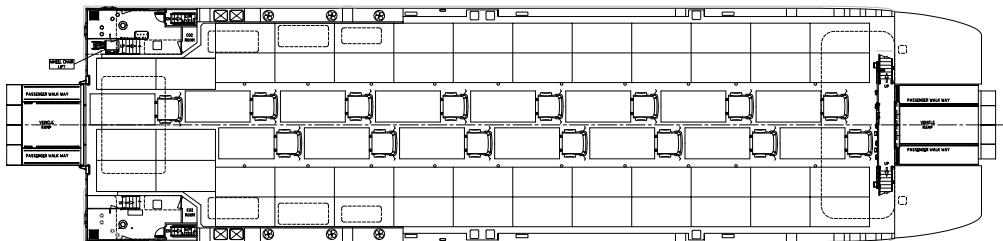
BRIDGE DECK



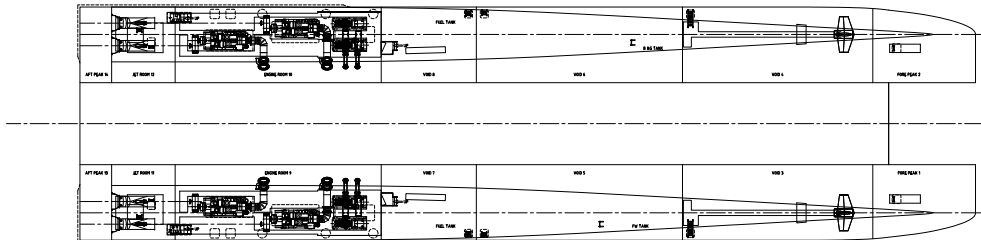
UPPER DECK



MAIN DECK



HULLS



"JAZAN" AND "FARASAN"

YARD NO: 342 & 343

DESTINATION: SAUDI ARABIA

DELIVERED: 2009

CLIENT: KINGDOM OF SAUDI ARABIA