

AUTO EXPRESS 88



"OSMAN GAZI-1" AND "ORHAN GAZI-1"

YARD NO : 294 & 295

DESTINATION: TURKEY

DELIVERED: 2007

CLIENT: ISTANBUL METROPOLITAN MUNICIPALITY

PRINCIPAL DIMENSIONS

Length overall	87.85 metres
Length (waterline)	77.4 metres
Beam (moulded)	24.0 metres
Depth (moulded)	8.25 metres
Hull draft (maximum)	3.63 metres

PAYLOAD AND CAPACITIES

Passengers	1,200
Crew	30
Vehicles	225 cars or 126 lane metres & 158 cars
Maximum axle loads	
Centre lanes	(dual axle) 12.0 tonnes (single axle) 9.0 tonnes
Outer lanes	3.5 tonnes
Vehicle deck clear heights	
Side lanes	(above mezzanine) 2.0 metres
Side lanes	(below mezzanine) 2.2 metres
Maximum deadweight	470 tonnes
Fuel	160,000 litres

PROPULSION

Main engines	4 x MTU 20V 8000 M71R 4 x 7,200 kW @ 1,150 rpm
Gearboxes	4 x Reintjes VLJ 6831
Waterjets	4 x Lips LJ 120E

PERFORMANCE (with Ride Control fitted)

Service speed (90% MCR)	37.4 knots
-------------------------	------------

CLASSIFICATION

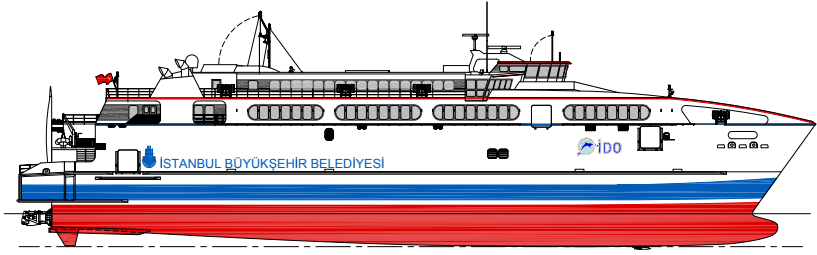
Germanischer Lloyd
 ❏ 100 A5, HSB-B OC3, MC-B
 Turkey Flag



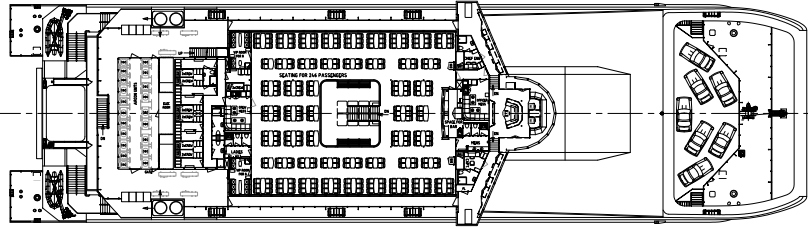
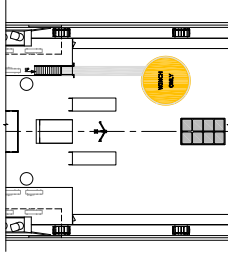
AUTO EXPRESS 88

Vessel Type: 88m High Speed Vehicle-Passenger Catamaran

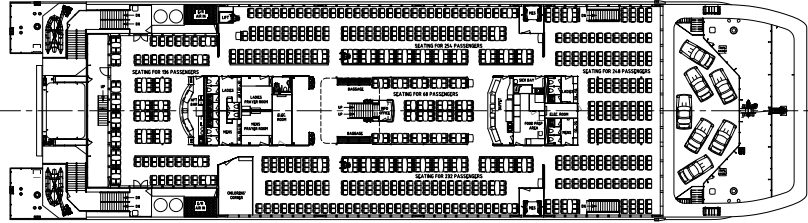
PROFILE



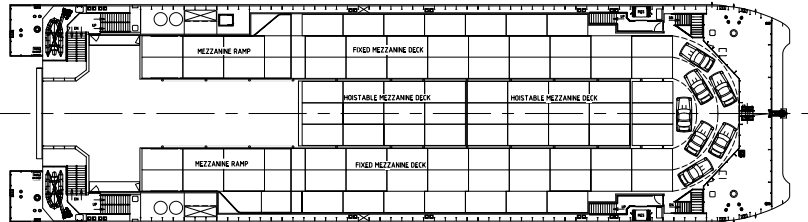
BRIDGE DECK



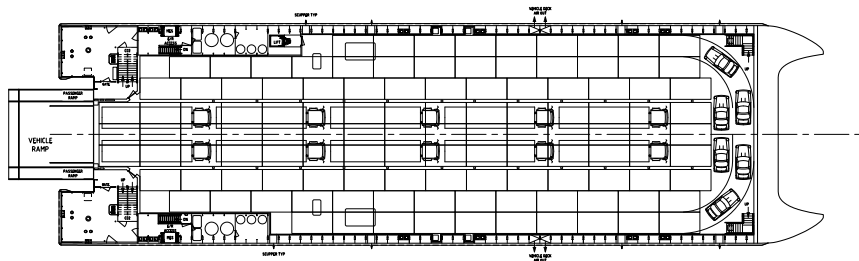
UPPER DECK



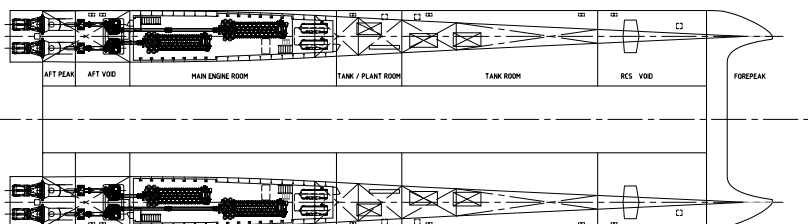
MEZZANINE DECK



MAIN DECK



HULLS



YARD NO : 294 & 295

DESTINATION: TURKEY

DELIVERED : 2007

CLIENT : ISTANBUL METROPOLITAN MUNICIPALITY