

AUSTAL WIND EXPRESS TRI SWATH 27



CABLE BAY

YARD NO: 347

DESTINATION: EUROPE

DELIVERY: MAY 2013

CLIENT: TURBINE TRANSFERS LTD

GENERAL VESSEL DESCRIPTION

Vessel type	Wind Farm Support Vessel with Enhanced Seakeeping
Construction material	Aluminium
Hull form	SWATH Trimaran (TRI SWATH)

PRINCIPAL DIMENSIONS

Length overall	27.2 metres
Length waterline	23.0 metres
Load line length	≤ 24.0 metres
Beam moulded	10.5 metres
Hull depth moulded	3.7 metres
Draft (approx.)	2.1 metres

PAYLOAD AND CAPACITIES

Crew	3
Wind farm personnel	12
Deck cargo	4.5 tonnes
Deadweight (maximum)	13.74 tonnes
Fuel	8,000 litres

PROPULSION

Main engines	2 x MTU 10V 2000 M72 2 x 900 kW @ 2,250 rpm
Gearboxes	2 x ZF 3050 D
Propulsion	2 x Kamewa 50A3 Waterjets

PERFORMANCE

Service speed	23.0 knots at 90% MCR
Maximum speed	25.0 knots at 100% MCR
Range	> 350 nm (with a 20% reserve)

CLASSIFICATION

Det Norske Veritas (DNV)
 ✕1A HSLC Wind Farm Service 1 R2



AUSTAL WIND EXPRESS TRI SWATH 27

Vessel type: Wind Farm Support Vessel with Enhanced Seakeeping.

CABLE BAY

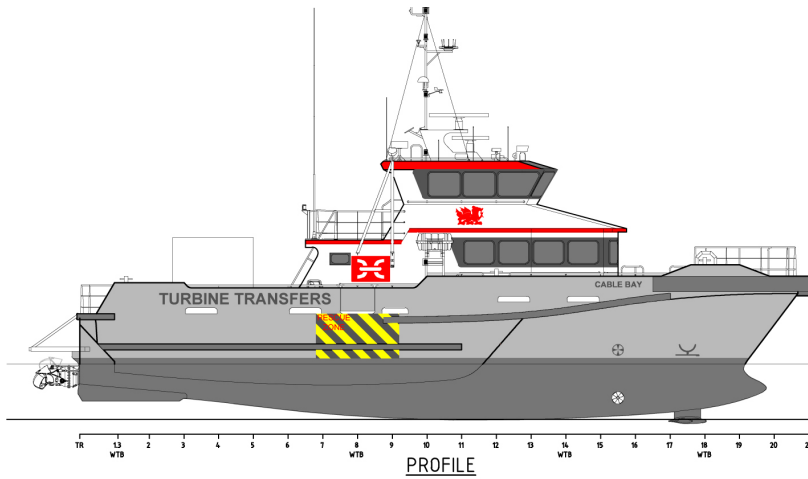
YARD NO: 347

DESTINATION: EUROPE

DELIVERY: MAY 2013

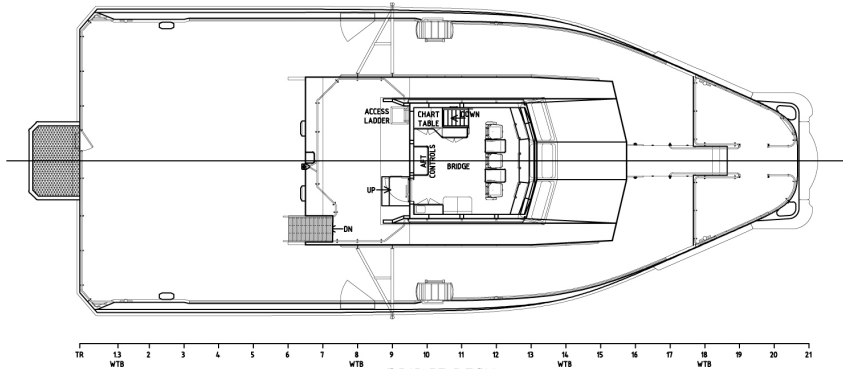
CLIENT: TURBINE TRANSFERS LTD

PROFILE



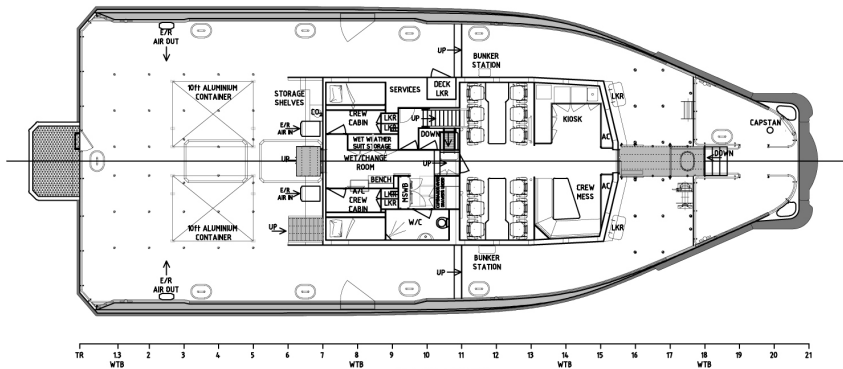
PROFILE

UPPER DECK



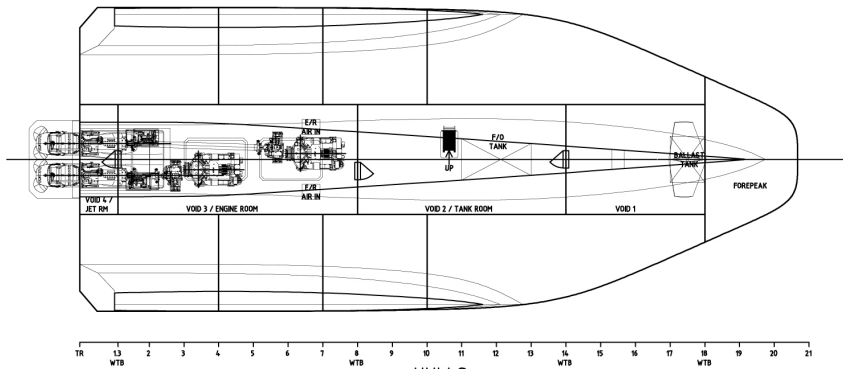
BRIDGE DECK

MAIN DECK



MAIN DECK

HULLS



HULLS

SHIPS • SYSTEMS • SUPPORT

WWW.AUSTAL.COM

