

AUSTAL WIND EXPRESS 27



GENERAL VESSEL DESCRIPTION

Vessel type	High Speed Wind Farm Support Vessel
Construction material	Aluminium
Hull form	Hard chine, "Z" bow catamaran

PRINCIPAL DIMENSIONS

Length overall	26.5 metres
Length waterline	24.0 metres
Beam moulded	7.5 metres
Hull depth moulded	3.5 metres
Draft (approx.)	1.4 metres

PAYLOAD AND CAPACITIES

Crew	3
Wind farm personnel	12
Deck cargo	10.0 tonnes
Deadweight (maximum)	22.0 tonnes
Fuel	15,800 litres

PROPULSION

Main engines	4 x Caterpillar C18 4 x 533 kW @ 2,100 rpm
Gearboxes	4 x ZF 665
Propulsion	4 x Kamewa 36 A3 waterjets

PERFORMANCE

Service speed	27.5 knots at 90% MCR
Maximum speed	+30 knots at 100% MCR
Range	680 nm (with 20% reserve)

CLASSIFICATION/FLAG

Det Norske Veritas (DNV)
 ✘1A1 HSLC Windfarm Service 1 R1



YARD NO : 356, 357 & 358

DESTINATION: EUROPE

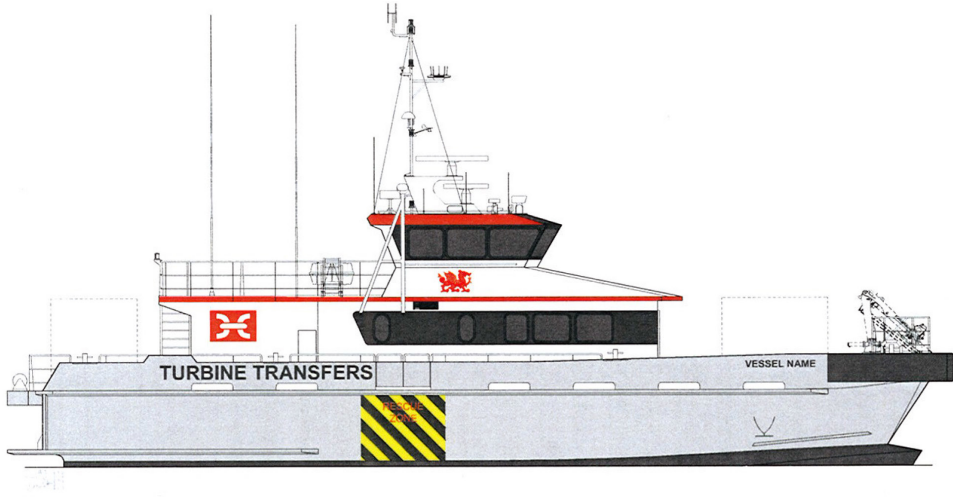
DELIVERY: DECEMBER 2013

CLIENT: TURBINE TRANSFERS LTD

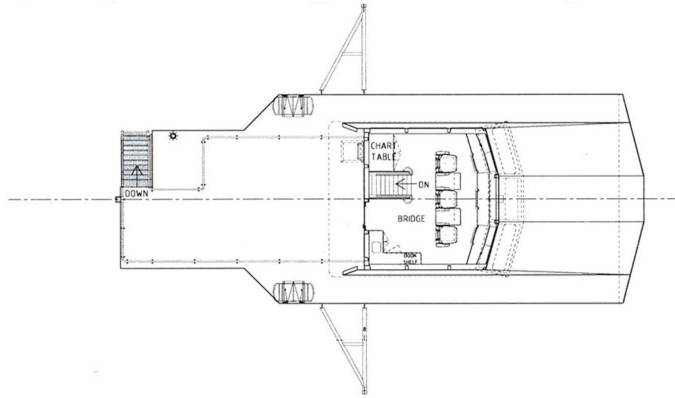
AUSTAL WIND EXPRESS 27

Vessel type: High Speed Wind Farm Support Vessel.

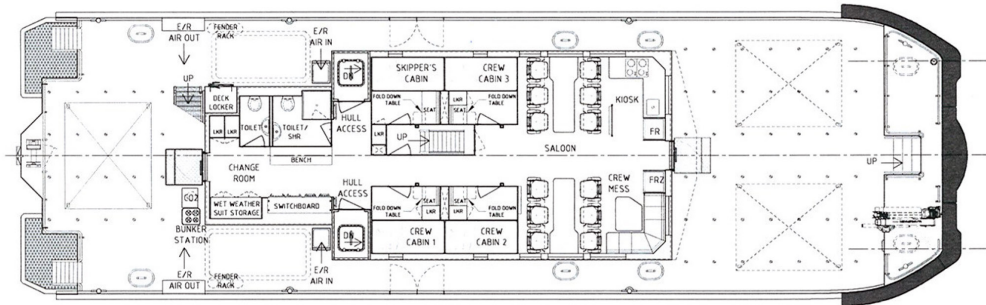
PROFILE



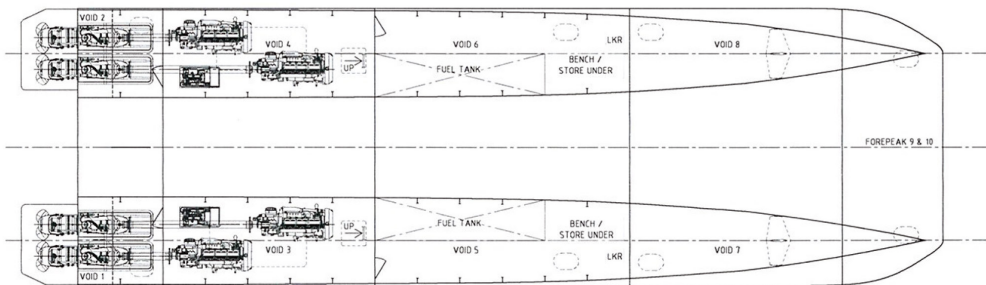
UPPER DECK



MAIN DECK



HULLS



YARD NO: 356, 357 & 358

DESTINATION: EUROPE

DELIVERY: DECEMBER 2013

CLIENT: TURBINE TRANSFERS LTD

SHIPS • SYSTEMS • SUPPORT

WWW.AUSTAL.COM

