

AUSTAL PATROL 58



CAPE CLASS PATROL BOAT

YARD NO: 361-368 & 380-381

DESTINATION: AUSTRALIA

DELIVERY: MAR 2013 - JUNE 2017

CLIENTS: AUSTRALIAN BORDER
FORCE & ROYAL AUSTRALIAN NAVY

PRINCIPAL DIMENSIONS

Length overall	57.8 metres
Beam (overall)	10.3 metres
Draft (approx.)	3.0 metres

COMMUNICATION & SENSORS

Communication system	Secure/Non-secure voice and data over VHF, UHF, SATCOM and Sea Boat's Situational Awareness
Navigation	Integrated bridge system including: Radars, 2 x ECDIS, 2 x Gyro Compass, Secure AIS, 2 x DGPS, EOSS and VDR

ADDITIONAL FEATURES

Sea boats	2 x 7.3 metre Gemini
Motion control system	Austal 2 x 3.25m ² Roll fins, 2 x 4.5m ² Trim Flaps

PROPULSION

Main engines	2 x Caterpillar 3516C 2 x 2,525 kW @ 1,800 rpm
Gearboxes	2 x ZF 9055A
Propellers	2 x fixed pitch
Bow thruster	HRP 2001 TT(160 kW)

PERFORMANCE

Speed	25 knots
Range at 12 knots	> 4000 nautical miles

CLASSIFICATION

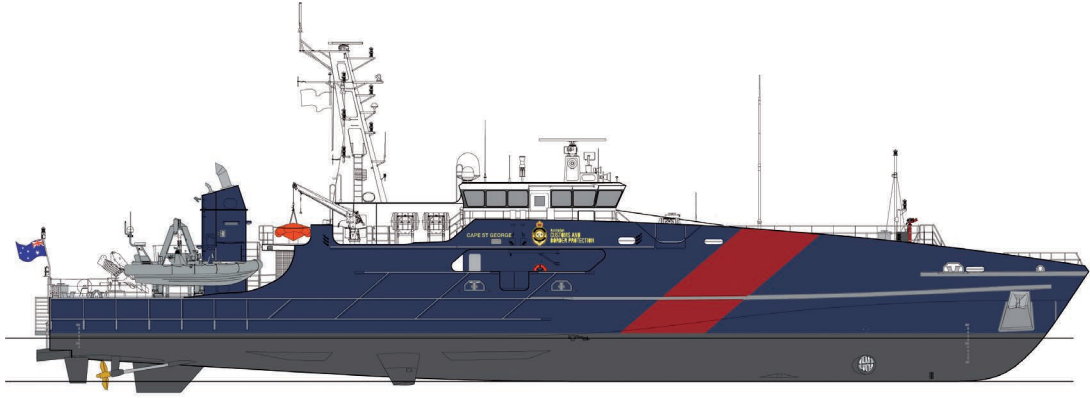
Det Norske Veritas
✱1A1 LC, PATROL, EO, NV, BIS, RP, NAUT-HSC, ELT, RADHAZ, SAM



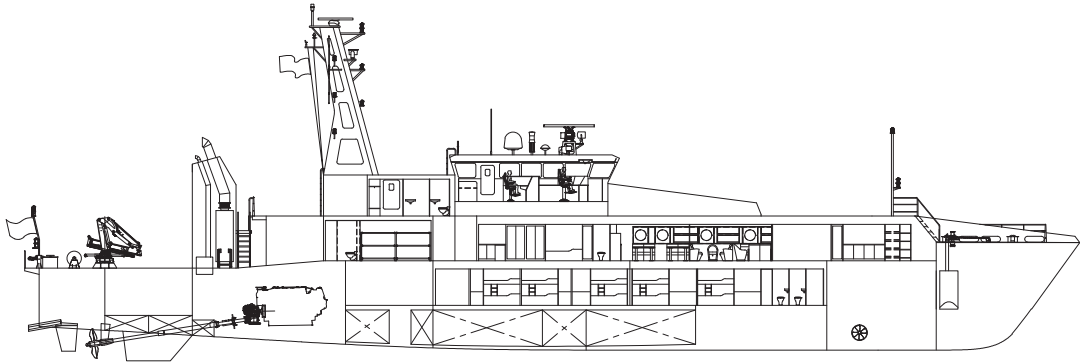
AUSTAL PATROL 58

Vessel Type: *Cape Class Patrol Boat*

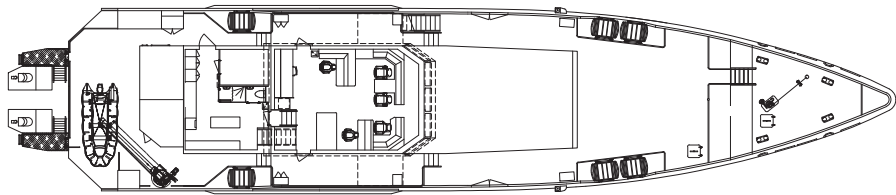
PROFILE



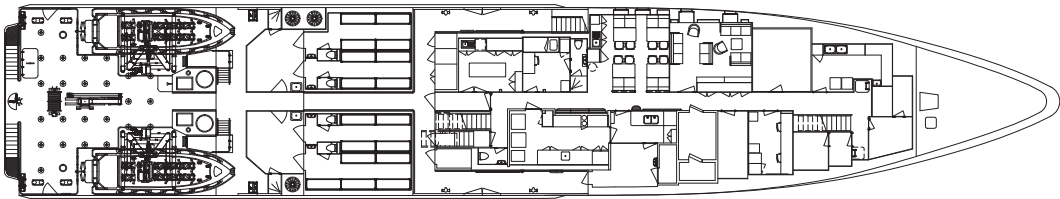
PROFILE @ CENTRELINE



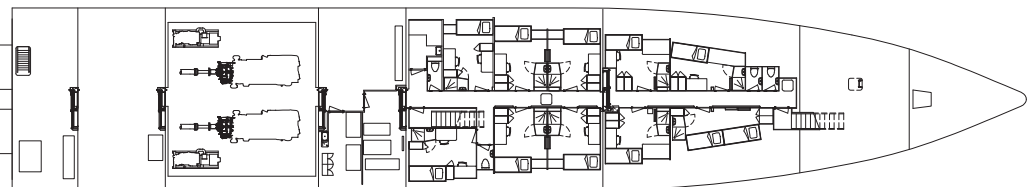
BRIDGE DECK



MAIN DECK



LOWER DECK



CAPE CLASS PATROL BOAT

YARD NO: 361-368 & 380-381

DESTINATION: AUSTRALIA

DELIVERY: MAR 2013 - JUNE 2017

CLIENTS: AUSTRALIAN BORDER FORCE & ROYAL AUSTRALIAN NAVY

100 Clarence Beach Road
Henderson
Tel +61 8 9410 1111
Fax +61 8 9410 2564
sales@austal.com
www.austal.com

