

# AUSTAL PATROL 56



“ARMIDALE CLASS PATROL BOAT”

YARD NO : 321 - 334

DESTINATION : AUSTRALIA

DELIVERED : MID 2005 - 2007

CLIENT : ROYAL AUSTRALIAN NAVY

## PRINCIPAL DIMENSIONS

Length overall	56.8 metres
Length (waterline)	52.1 metres
Beam (moulded)	9.5 metres
Depth (moulded)	5.0 metres
Draft	2.7 metres

## MANNING

Officers	7 (including Commanding Officer)
Senior sailors	4
Junior sailors	18
Total compliment	29

## ACCOMMODATION

Officers	Single berth CO's cabin, 3 x 2 berth cabins
Senior sailors	2 x 2 berth cabins
Junior sailors	1 x 2 berth cabins, 4 x 4 berth cabins
Austere accommodation	20 berth

## ARMAMENT

Primary weapon	25mm Rafeal Typhoon MK25 stabilised naval gun
Secondary weapon	2 x 12.7mm M2HB heavy machine guns

## COMMUNICATION & SENSORS

Communication system	CEA Integrated Ships Communication System (CEA-ISCS)
Direction finding system	CEA Warrlock

## ADDITIONAL FEATURES

Sea boats	2 x 7.24 metre RHIBs
Motion control system	Seastate 2 x active roll fins, +2 x active transom flaps

## PROPULSION

Main engines	2 x MTU 16V 4000 M70 2 x 2,320 kW @ 2,000 rpm
Gearboxes	2 x ZF 7550 A
Propellers	2 x fixed pitch
Bow thruster	160 kW



## PERFORMANCE

Speed:	Maximum	>25 knots
	Loiter	4 - 10 knots for 60 hours
Fuel Consumption		0.9 tonnes/hour
Range		3,000 nautical miles

## CLASSIFICATION

Det Norske Veritas  
 ✘ 1A LC Naval Support Patrol EO  
 NAUT NV CRANE (aus)

# AUSTAL PATROL 56

Vessel Type: 56m Aluminium Patrol Boat

“ARMIDALE CLASS PATROL BOAT”

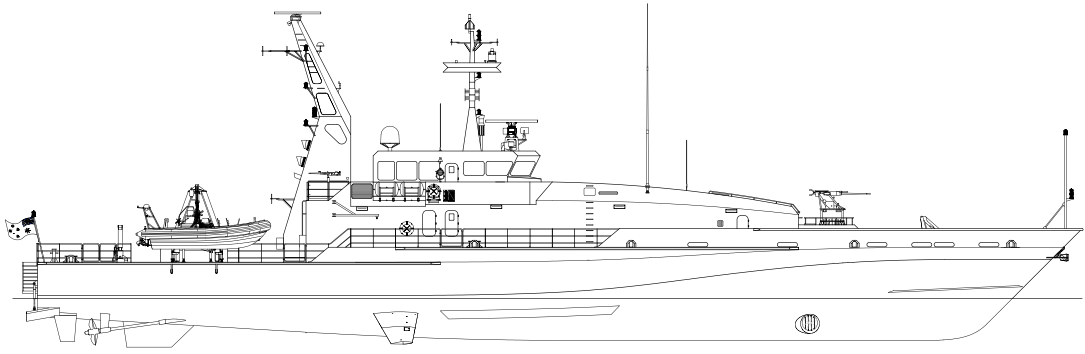
YARD NO : 321 - 334

DESTINATION : AUSTRALIA

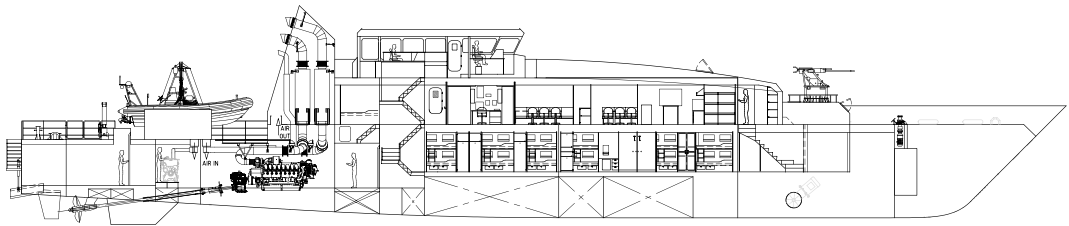
DELIVERED : MID 2005 - 2007

CLIENT : ROYAL AUSTRALIAN NAVY

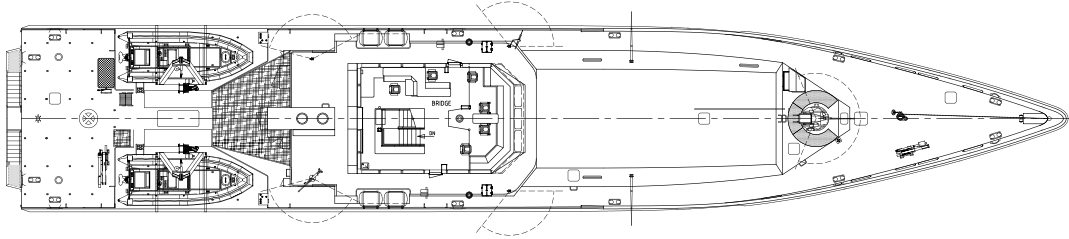
PROFILE



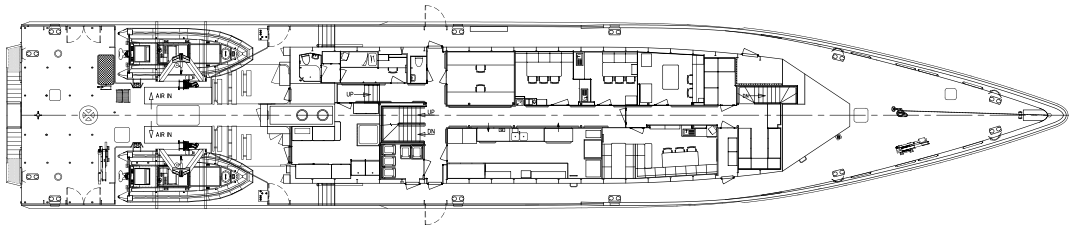
PROFILE @ CENTRELINE



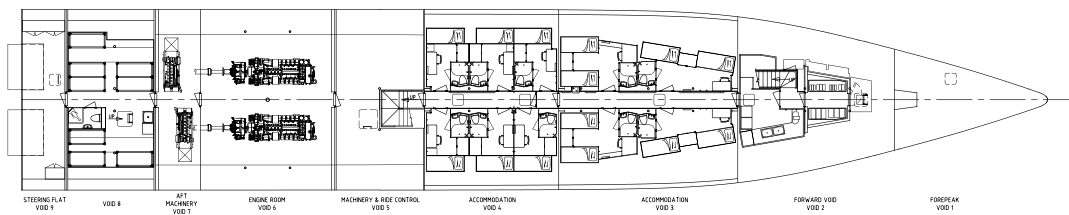
BRIDGE DECK



MAIN DECK



LOWER DECK



SHIPS • SYSTEMS • SUPPORT

[WWW.AUSTAL.COM](http://WWW.AUSTAL.COM)

