

# AUSTAL PATROL 38



## GENERAL VESSEL DESCRIPTION

Vessel type	Long range patrol boat
Material	Aluminium alloy
Hull form	Deep V, single chine monohull

## PRINCIPAL DIMENSIONS

Length overall	38.2 metres
Length (waterline)	32.1 metres
Beam (moulded)	7.2 metres
Depth (moulded)	4.5 metres
Hull draft (maximum)	4.5 metres

## PERSONNEL

Additional personnel	12
Accommodation	15

## PROPULSION

Main Engines	2 x MTU 16V 2000 M70 2 x 1,050 kW @ 2,100 rpm
Gearboxes	2 x Reintjes WVS430/1
Propellers	2 x fixed pitch, 4 blade

## PERFORMANCE

Speed - maximum	24.0 knots
Fuel consumption	0.4 tonnes/hour
Range	3,000 nautical miles

## ADDITIONAL FEATURES

Sea boats	2 x 6.4 metre RIBs on compensated davits
-----------	--

## CLASSIFICATION

DNV ✕ 1A1 LC R1 Patrol EO  
Australian Maritime Safety Authority USL Code 2B



YARD NO.: 131 - 138

DESTINATION: AUSTRALIA

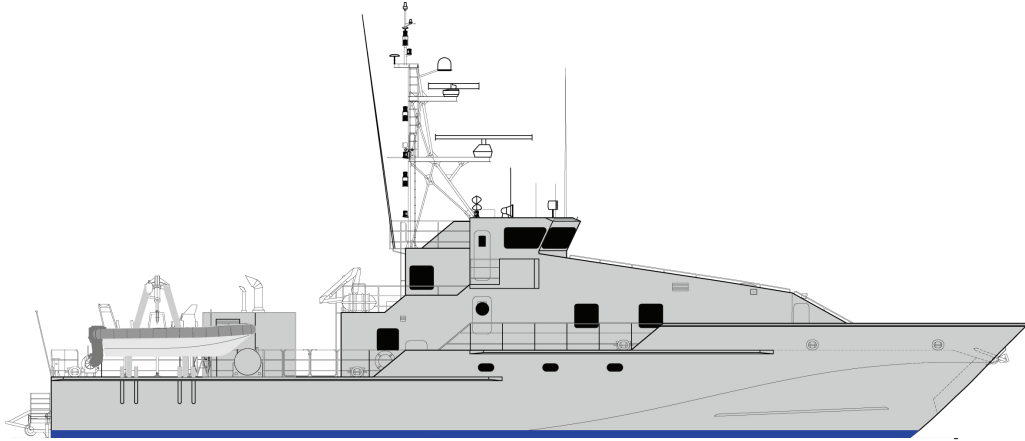
DELIVERY: FEB 1999 - AUG 2000

CLIENT: AUSTRALIAN CUSTOMS AND  
BORDER PROTECTION

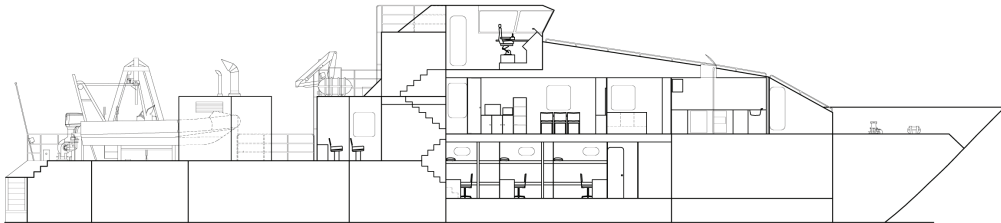
# AUSTAL PATROL 38

Vessel type: Long Range Patrol Boat

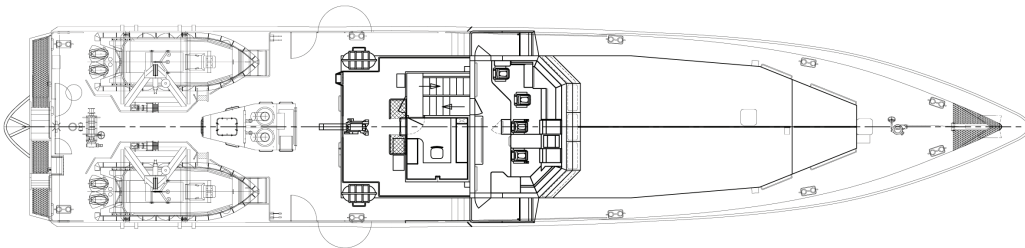
PROFILE



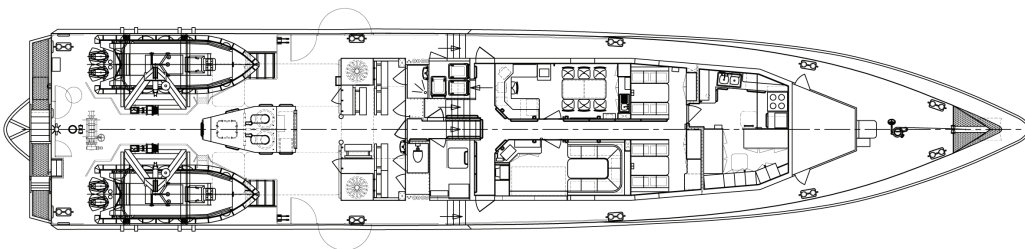
PROFILE



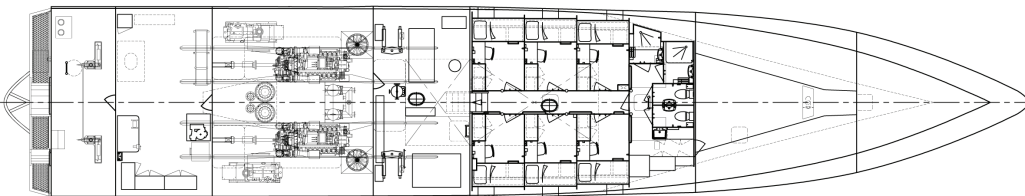
BRIDGE DECK



UPPER DECK



MAIN DECK



YARD NO: 131 - 138

DESTINATION: AUSTRALIA

DELIVERY: FEB 1999 - AUG 2000

CLIENT: AUSTRALIAN CUSTOMS AND BORDER PROTECTION

AUSTRALIAN CUSTOMS AND BORDER PROTECTION - "BAY CLASS"

SHIPS • SYSTEMS • SUPPORT

[WWW.AUSTAL.COM](http://WWW.AUSTAL.COM)

