

AUSTAL PATROL 16



YARD NO : 154 - 160
NSW WATER POLICE - CLASS 2

DESTINATION : AUSTRALIA

DELIVERED : AUGUST 2000

CLIENT : NSW WATER POLICE

GENERAL VESSEL DESCRIPTION

Vessel type	Police patrol boat
Material	Aluminium alloy
Hull form	Warped planing monohull

PRINCIPAL DIMENSIONS

Length overall	17.0 metres
Length (waterline)	14.2 metres
Beam	4.9 metres
Depth	2.7 metres
Draft	1.2 metres

PERSONNEL

Crew	4
Additional personnel	8
Accommodation	4

PROPULSION

Main engines	2 x Scania DI 12 42 2 x 485 kW @ 2,300 rpm
Gearboxes	2 x Twin Disc MG 5114 1A
Propellers	2 x fixed pitch

PERFORMANCE

Speed (maximum)	28.5 knots
Fuel consumption	0.2 tonnes/hour
Range	400 nautical miles

SURVEY

Survey	USL Code 2B - 200nm offshore
--------	------------------------------



AUSTAL PATROL 16

Vessel Type: Police Patrol Boat

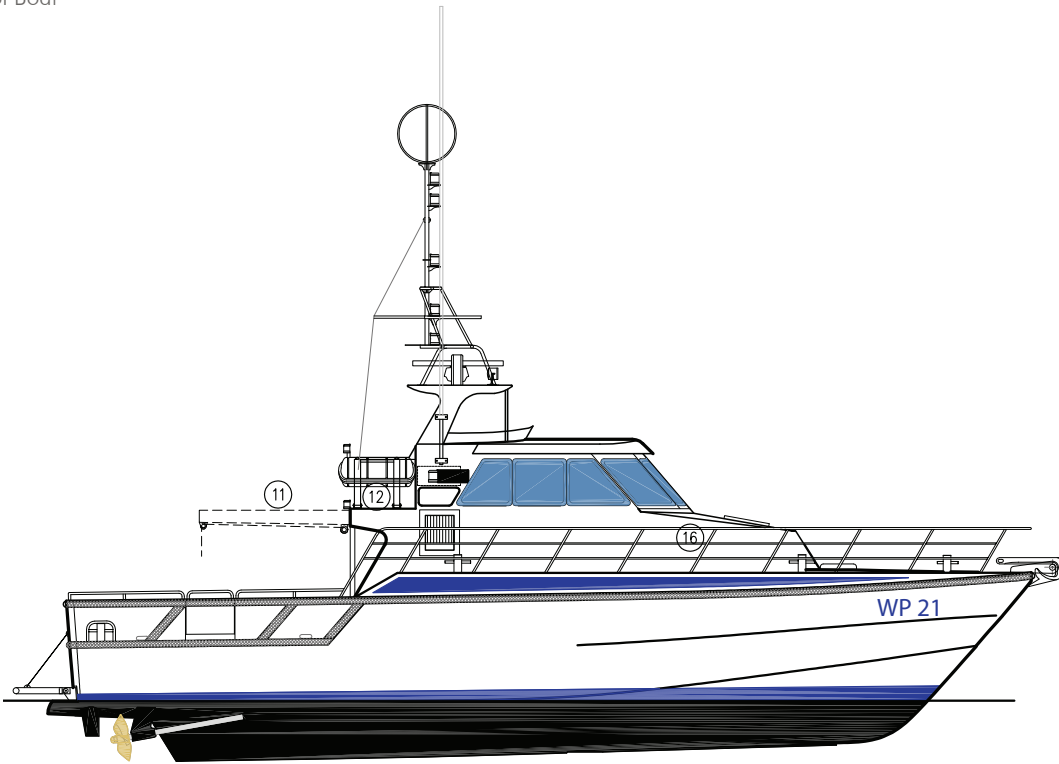
YARD NO: 154 - 160
NSW WATER POLICE - CLASS 2

DESTINATION: AUSTRALIA

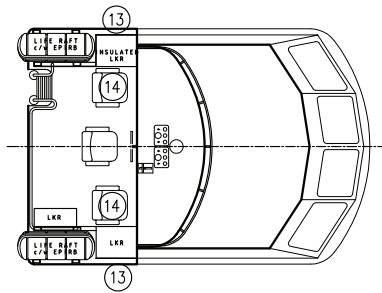
DELIVERED: AUGUST 2000

CLIENT: NSW WATER POLICE

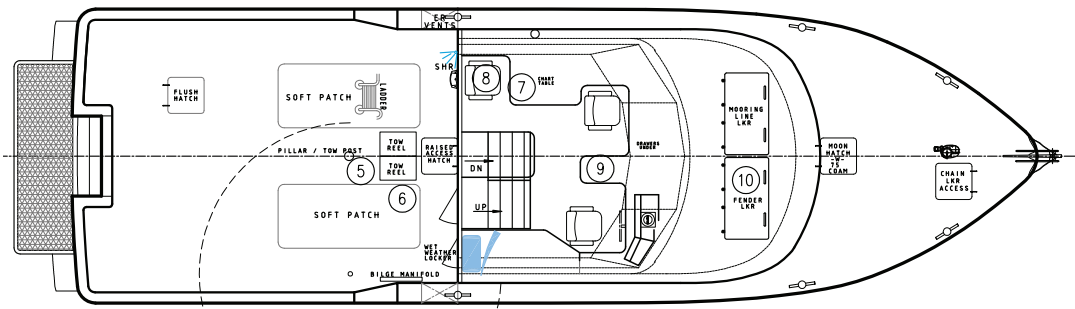
PROFILE



UPPER DECK



MAIN DECK



LOWER DECK

