

AUSTAL HSSV 72



YARD NO: 390 - 391
HIGH SPEED SUPPORT VESSEL

DESTINATION: OMAN

DELIVERY: 2016

CLIENT: ROYAL NAVY OF OMAN

PRINCIPAL DIMENSIONS

Length Overall	72.5 metres
	76.6 metres (with ramp)
Beam (Moulded)	18.2 metres
Beam (Overall)	18.66 metres
Draft (Approx.)	3.0 metres
Material	Aluminium Alloy
Hull Form	Catamaran
Maximum Deadweight	325 tonnes

MISSION/LOGISTICS/FLIGHT DECK

Deck Area	900 metres ²
Clear Height	4.5 metres
Flight Deck	22.0 metres x 12.0 metres
Nominal Helicopter Capability	NH-90

PERSONNEL DECK

Crew	69
Fixed Berths	69
Personnel Seating	260

PROPULSION

Main Engines	4 x MTU 20V 4000 M93L
Water Jets	4 x Rolls Royce 80S3

PERFORMANCE

Endurance	7 days
Max Speed (200T DWT)	35 knots
Range at 12.5 knots	2,150 nautical miles

WEAPONS AND SENSORS

Weapons	1 x 20mm naval gun 4 x 12.7mm GPMG
Sensors	1 x Electro Optical Surveillance System (EOSS)
Operations Room	8 x Seated positions (15m ²)

CAPACITIES

Vehicle Capacity	158 lane metres
Bi-Folding Slewing Ramp	12 x 4.25 metres
Boat Launch Beam Crane System Max SWL	12.0 tonnes



CLASSIFICATION

✠ 100 N5 RSA(200) HSDE NAVY TROOP CARRIER FO(HELIL)
✠ MC

AUSTAL HSSV 72

Vessel Type: High Speed Support Vessel

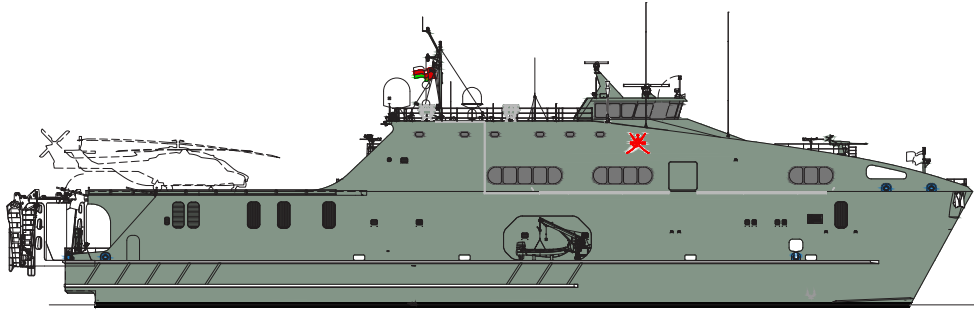
YARD NO: 390 - 391
HIGH SPEED SUPPORT VESSEL

DESTINATION: OMAN

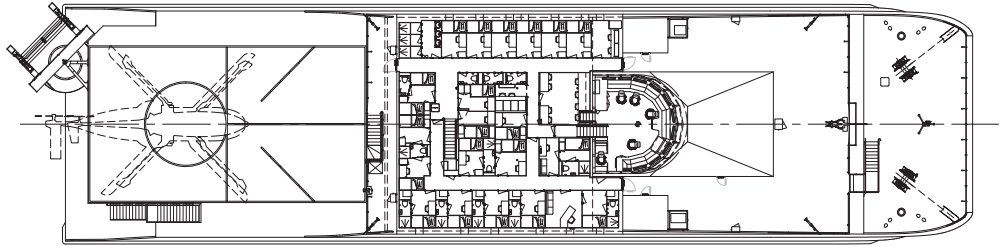
DELIVERY: 2016

CLIENT: ROYAL NAVY OF OMAN

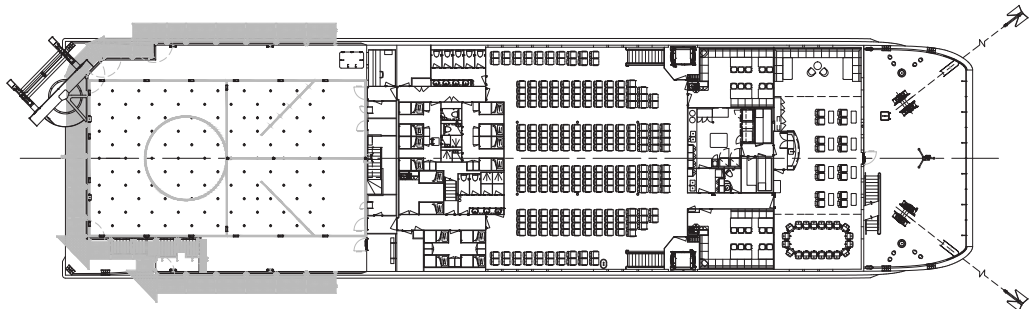
PROFILE



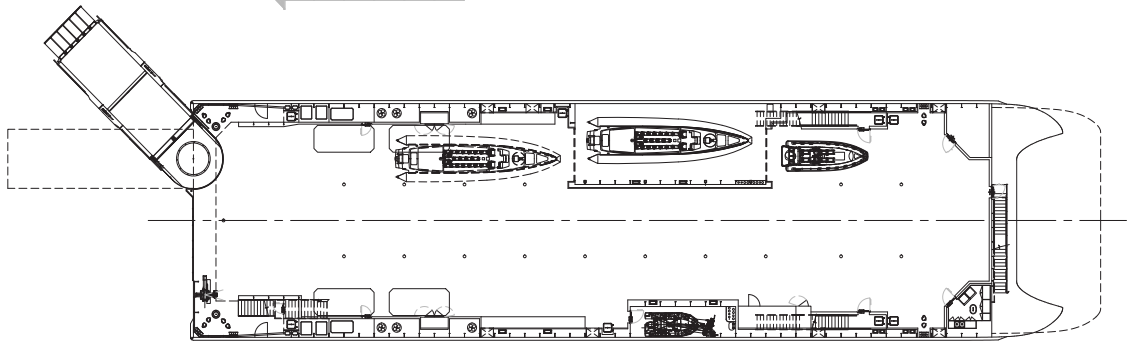
02 DECK



01 DECK



MAIN DECK



HULL

