

# AUSTAL 48



## PRINCIPAL DIMENSIONS

Length overall	47.5 metres
Length (waterline)	43.8 metres
Beam (moulded)	11.8 metres
Hull depth (moulded)	3.8 metres
Hull draft (maximum)	1.63 metres

## PAYLOAD AND CAPACITIES

Passengers	413
Crew	16
Maximum deadweight	70 tonnes
Fuel	20,000 litres

## PROPULSION

Main engines	4 x MTU 16V 4000 M70 2,320 kW @ 2,000 rpm
Gearboxes	4 x Reintjes VLJ 930
Waterjets	4 x Kamewa 63 SII

## PERFORMANCE

Service speed (90% MCR)	42 knots
-------------------------	----------

## COMFORT ENHANCEMENT

Active T-Foil and Interceptor Ride Control System (optional fit)

## CLASSIFICATION

Det Norske Veritas  
✘ 1A1 HSLC Passenger R2 EO  
Hong Kong (SAR)



YARD NO: 311 - 320, 350 - 353

DESTINATION: HONG KONG

DELIVERED: 2007 - 2009

CLIENT: COTAIJET LIMITED

"THE GRAND CANAL SHOPPES", "THE VENETIAN", "THE COTAI STRIP EXPO", "THE GONDOLIER", "THE CIRQUE DU SOLEIL", "SAN LUCA", "THE PLAZA", "COTAI STRIP COTAIARENA", "COTAI STRIP COTAI GOLD", "GOURMET DINING", "MARCO POLO", "ST. MARK", "CASTELLA SQUARE" & "DI MODA SQUARE"

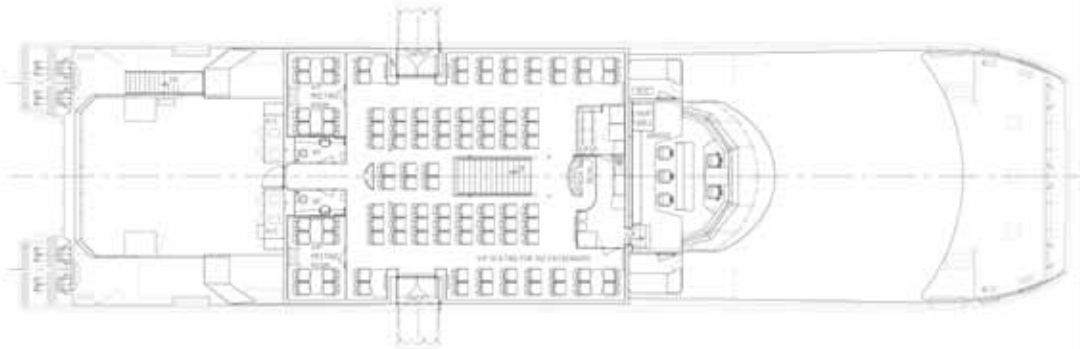
# AUSTAL 48

Vessel type: 48m High Speed Passenger Catamaran

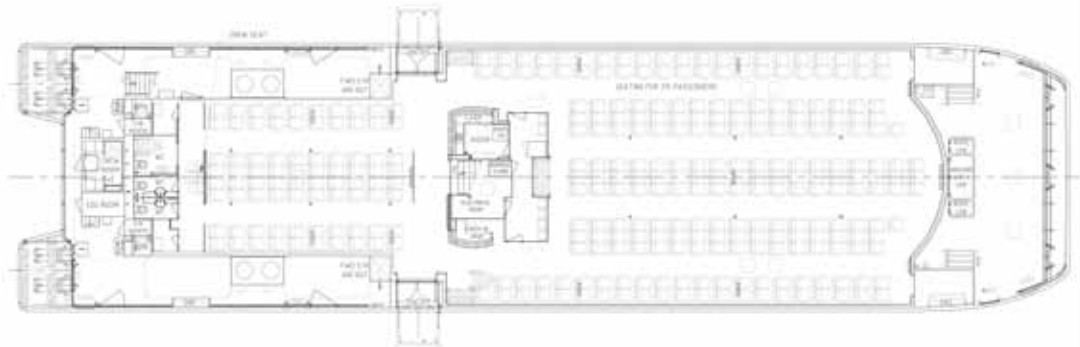
PROFILE



UPPER DECK



MAIN DECK



HULLS



YARD NO: 311 - 320, 350 - 353

DESTINATION: HONG KONG

DELIVERED: 2007 - 2009

CLIENT: COTAJET LIMITED

"THE GRAND CANAL SHOPPES", "THE VENETIAN", "THE COTAI STRIP EXPO", "THE GONDOLIER", "THE CIRQUE DU SOLEIL", "SAN LUCA", "THE PLAZA", "COTAI STRIP COTAIARENA", "COTAI STRIP COTAI GOLD", "GOURMET DINING", "MARCO POLO", "ST. MARK", "CASTELLA SQUARE" & "DI MODA SQUARE"