

# AUTO EXPRESS 45



"SILVER EXPRESS"

YARD NO : 284

DESTINATION : GUADELOUPE

DELIVERED : NOVEMBER 2005

CLIENT : L'EXPRESS DES ILES, SA

## PRINCIPAL DIMENSIONS

Length overall	45.24 metres
Length (waterline)	40.2 metres
Beam (moulded)	12.3 metres
Depth (moulded)	4.0 metres
Hull draft (approx.)	1.8 metres

## PAYLOAD AND CAPACITIES

Passengers	360
Cars	10
Maximum deadweight	67 tonnes
Maximum axle loads	1 tonne
Vehicle deck clear heights	2.2 metres
Crew	6
Fuel	21,000 litres

## PROPULSION

Main engines	4 x MTU 16V 396 TE74L
Gearboxes	4 x ZF 7550
Waterjets	4 x Kamewa 63 S11

## PERFORMANCE

Speed (90% MCR)	38.0 knots
-----------------	------------

## CLASSIFICATION

Bureau Veritas  
 1  HULL  MACH  AUT-UMS HSC-CAT A  
 French Flag



# AUTO EXPRESS 45

Vessel Type: 45m High Speed Vehicle-Passenger Ferry

"SILVER EXPRESS"

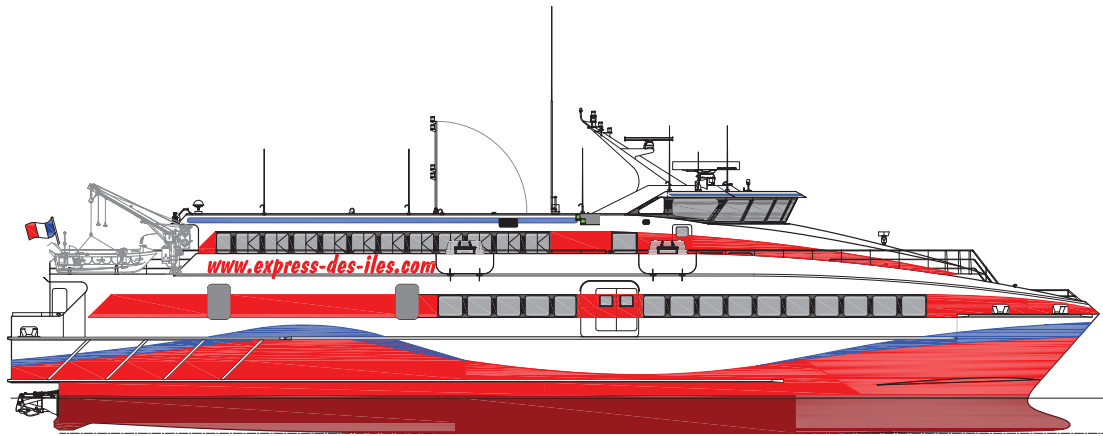
YARD NO.: 284

DESTINATION: GUADELOUPE

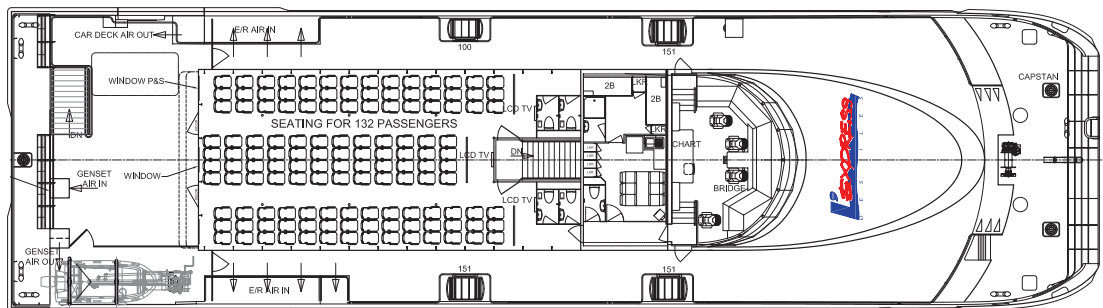
DELIVERED: NOVEMBER 2005

CLIENT: L'EXPRESS DES ILES, SA

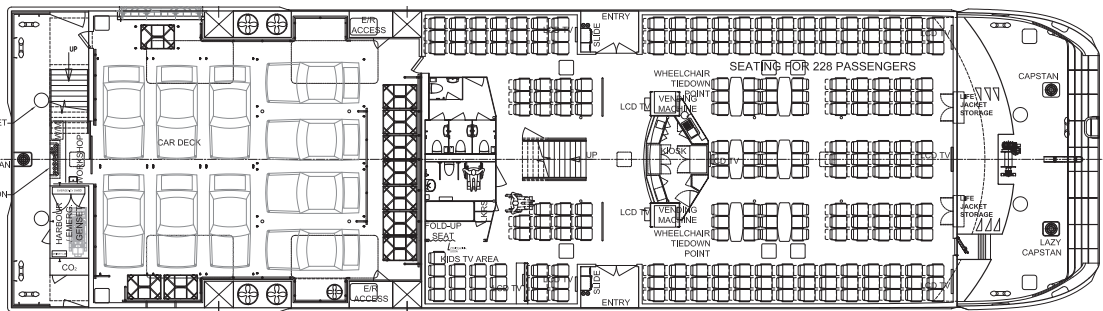
PROFILE



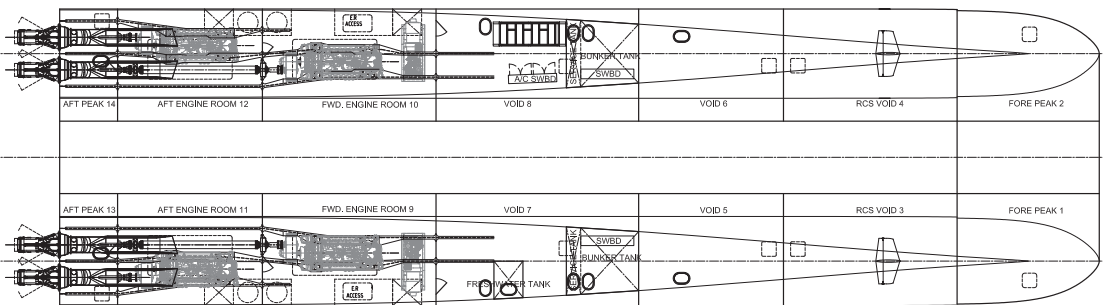
UPPER DECK



MAIN DECK



HULLS



100 Clarence Beach Road  
Henderson  
Western Australia 6166  
Tel +61 8 9410 1111  
Fax +61 8 9410 2564  
sales@austal.com  
www.austal.com

