

AUSTAL 45



"GOLD EXPRESS"

YARD NO.: 283

DESTINATION: GUADELOUPE

DELIVERED: NOVEMBER 2005

CLIENT: L'EXPRESS DES ILES, SA

PRINCIPAL DIMENSIONS

Length overall	45.24 metres
Length (waterline)	40.2 metres
Beam (moulded)	12.3 metres
Depth (moulded)	4.0 metres
Hull draft (approx.)	1.8 metres

PAYLOAD AND CAPACITIES

Passengers	446
Maximum deadweight	63 tonnes
Crew	6
Fuel	21,040 litres

PROPULSION

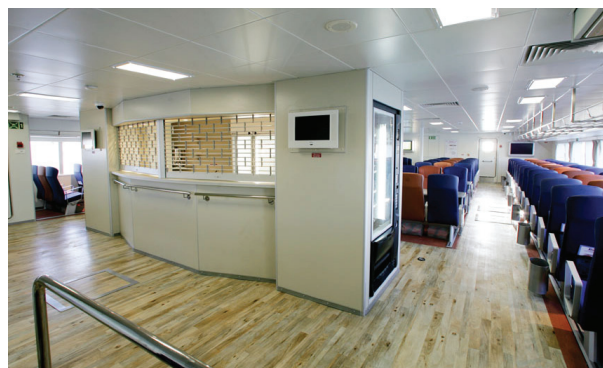
Main engines	4 x MTU 16V 396 TE74L
Gearboxes	4 x ZF 7550
Waterjets	4 x Kamewa 63 S11

PERFORMANCE

Speed (90% MCR)	38.0 knots
-----------------	------------

CLASSIFICATION

Bureau Veritas
 1 HULL MACH AUT-UMS HSC-CAT A
 French Flag



AUSTAL 45

Vessel Type: 45m High Speed Passenger Ferry

"GOLD EXPRESS"

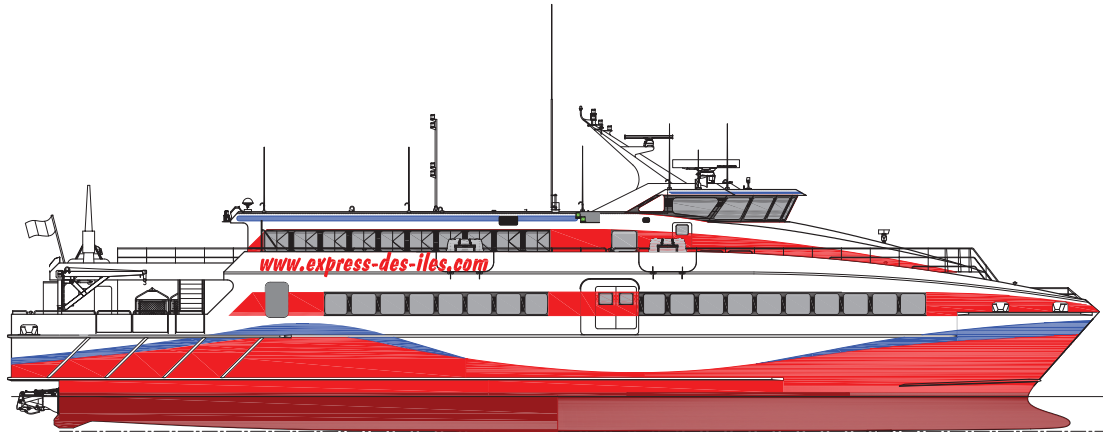
YARD NO.: 283

DESTINATION: GUADELOUPE

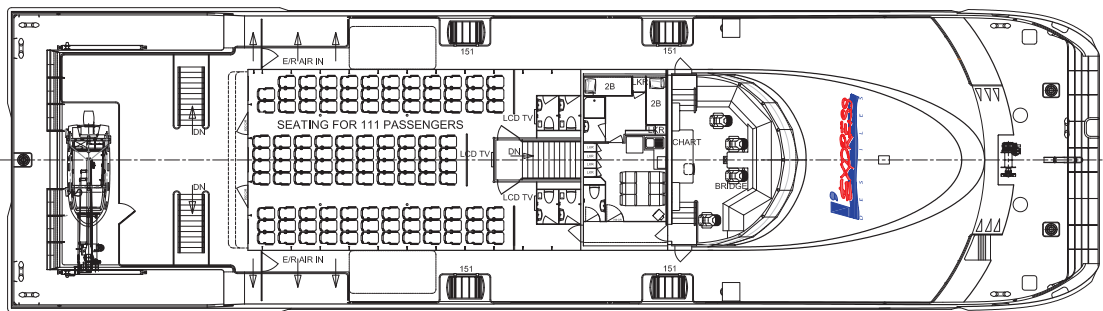
DELIVERED: NOVEMBER 2005

CLIENT: L'EXPRESS DES ILES, SA

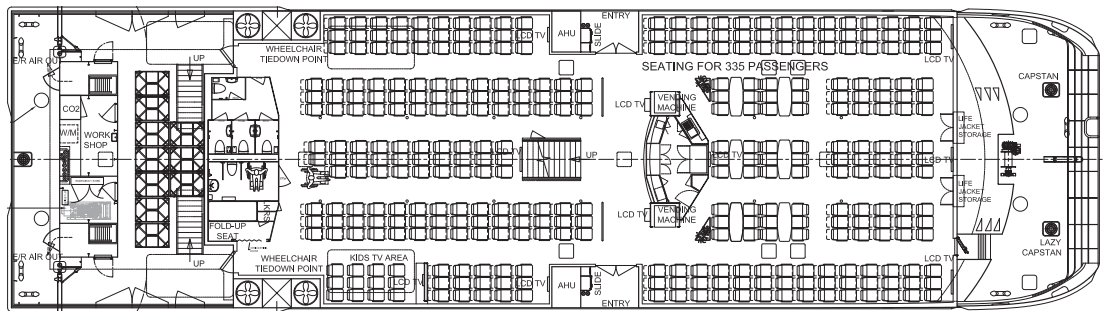
PROFILE



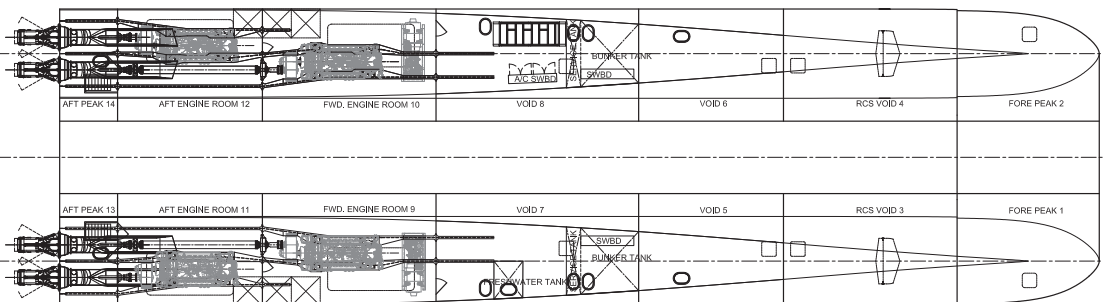
UPPER DECK



MAIN DECK



HULLS



100 Clarence Beach Road
Henderson
Western Australia 6166
Tel +61 8 9410 1111
Fax +61 8 9410 2564
sales@austal.com
www.austal.com

