

AUTO EXPRESS 109



"FSTR"

YARD NO: 419

DESTINATION: NORWAY

DELIVERY: FEBRUARY 2021

CLIENT: FJORD LINE

PRINCIPAL DIMENSIONS

Length overall	109.00 metres
Length (waterline)	105.00 metres
Beam (moulded)	30.50 metres
Hull depth (moulded)	7.60 metres
Hull draft	3.42 metres

PAYLOAD AND CAPACITIES

Passengers	1,200
Crew	35 (Subject to Flag)
Vehicles	404 cars or 530 l/m and 228 cars
Car Bay Sizes	4.50 metres x 2.35 metres
Truck Bay Size	530 lane metres x 3.10 metres wide
Truck deck height	4.60 metres
Axle loads	Truck lanes 9 tonnes for single wheel axles or 13 tonnes for a double wheel axle Cars 2.0 tonne per axle on mezzanine deck
Maximum deadweight	1,019.00 tonnes
Fuel	2 x 65,000 litres

PROPULSION

Main engines	4 x MAN 20V 28/330 STC
Gearboxes	4 x ZF 60000 NR2H
Waterjets	4 x Wartsila Lips LJX 1500

PERFORMANCE

Speed	37.5 knots @ 90% MCR
-------	----------------------

CLASSIFICATION

Society:	DNV-GL
Class Notation:	✱ 1A HSLC R1 Ferry B EO
Flag State:	Denmark



AUTO EXPRESS 109

Vessel type: 109m High Speed Vehicle Passenger Catamaran

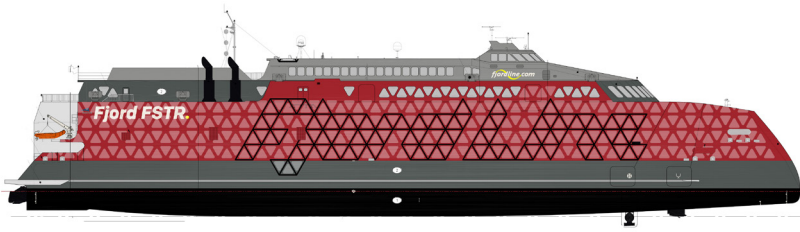
"FSTR"

YARD NO: 419

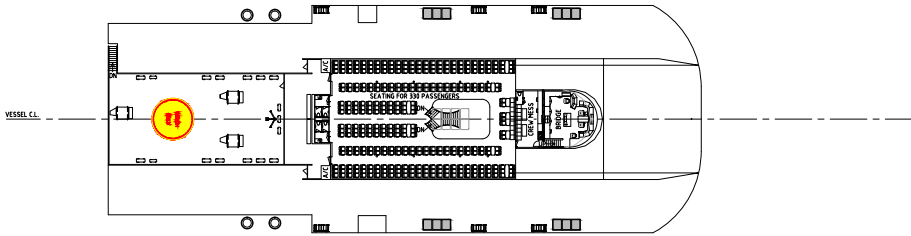
DESTINATION: NORWAY

DELIVERY: FEBRUARY 2021

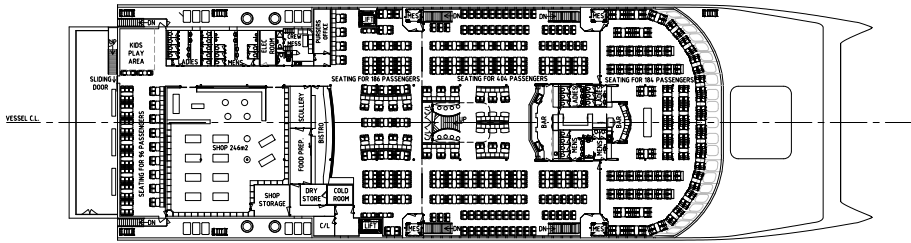
CLIENT: FJORD LINE



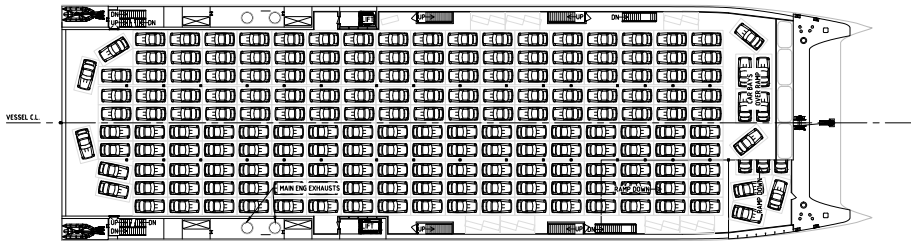
PROFILE



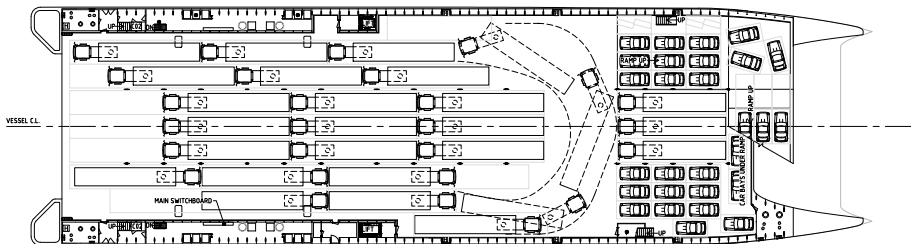
BRIDGE DECK



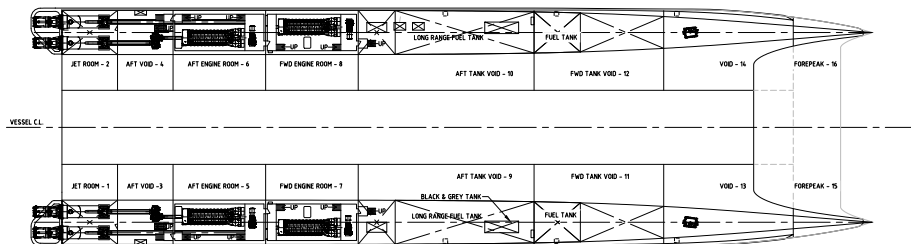
UPPER DECK



MEZZANINE DECK



MAIN DECK



HULL



100 Clarence Beach Road
Henderson
Western Australia 6166

Tel +61 8 9410 1111
Fax +61 8 9410 2564
sales@austal.com
austal.com